

# CITY OF COBURG TRAIL'S END PARK

UTILITY PROVIDERS		
UTILITY	PROVIDER	PHONE NUMBER
WATER	CITY OF COBURG	541-912-8291
SEWER	CITY OF COBURG	541-912-8291
STORM	CITY OF COBURG	541-912-8291
ELECTRIC	EMERALD P.U.D.	541-746-1583
ELECTRIC	PACIFIC POWER	503-255-4634
GAS	NW NATURAL	503-220-2415
TELEPHONE	CENTURY LINK	800-283-4237
TELEVISION	CHARTER COMM.	503-255-4634

LOCATION OF UTILITIES SHOWN ON THE PLANS IS APPROXIMATE. THE CONTRACTOR SHALL CALL THE "ONE-CALL" UTILITY LOCATION NUMBER, 1-800-332-2344, FOR FIELD LOCATION AND DEPTH BEFORE EXCAVATING.

## LEGEND

<b>EXISTING</b>		<b>PROPOSED</b>	
	APPROXIMATE PROPERTY LINE		CURB
	CURB		EDGE OF ASPHALT
	EDGE OF ASPHALT		CONCRETE
	CONTOUR LINE		GRAVEL
	FENCE		RECLAIMED WATER LINE
	TOP OF BANK		ELEVATION
	BOTTOM OF DITCH		
	RECLAIMED WATER LINE		
	VALVE		
	UNKNOWN UTILITY		
	TELEPHONE RISER		
	TRANSFORMER		
	ELECTRICAL VAULT		
	SIGN		
	DECIDUOUS TREE		
	EDGE OF CONCRETE		
	SPOT ELEVATION		



VICINITY MAP

- SHEET INDEX**
- C0.0 COVER
  - C0.1 CONSTRUCTION NOTES
  - C1.0 EXISTING CONDITIONS & DEMO PLAN
  - C2.0 SOUTH SITE PLAN
  - C2.1 NORTH SITE PLAN
  - C3.0 DETAILS
  - C3.1 DETAILS
  - C3.2 DETAILS
  - C3.3 DETAILS
  - C3.4 DETAILS
  - C3.5 DETAILS
  - C3.6 DETAILS
  - C3.7 PLANTING DETAILS
  - C3.8 PLANTING DETAILS
  - C3.9 PLANTING DETAILS
  - L1.0 SOUTH LANDSCAPING PLAN
  - L1.1 NORTH LANDSCAPING PLAN

**CIVIL ENGINEERING:**  
BRANCH ENGINEERING, INC.  
310 5TH STREET  
SPRINGFIELD, OR 97477  
CONTACT: DAMIEN GILBERT, P.E.  
CHRIS MORRIS, E.I.T.  
PHONE: (541) 746-0637

**OWNER:**  
THE CITY OF COBURG  
91136 N. WILLAMETTE STREET  
COBURG, OR 97408  
CONTACT: BRIAN HARMON  
PHONE: (541) 228-8281



**CITY OF COBURG**  
**TRAIL'S END PARK PLANS**  
N COBURG INDUSTRIAL WAY  
COBURG, OR  
97408

revisions:

date: JUNE 11, 2019  
drawn by: CM  
designer: CM  
project no: 19-004C

**COVER SHEET**

sheet: **C0.0**

X 392.02 CONC  
X 387.5



## GENERAL CONSTRUCTION NOTES

1. CONSTRUCTION SHALL CONFORM TO THE CURRENT OREGON STANDARD SPECIFICATIONS FOR CONSTRUCTION AND THE OREGON STANDARD DRAWINGS. WHERE COBURG STANDARD DRAWINGS ARE REFERENCED AND APPLICABLE TO THE CONSTRUCTION, COBURG STANDARDS SHALL APPLY.
2. ATTENTION: OREGON LAW REQUIRES YOU TO FOLLOW RULES ADOPTED BY THE OREGON UTILITY NOTIFICATION CENTER. THOSE RULES ARE SET FORTH IN OAR 952-001-48 BUSINESS HOURS (2 BUSINESS DAYS) PRIOR TO 0010 THROUGH OAR 952-001-0090. YOU MAY OBTAIN COPIES OF THE RULES BY CALLING THE CENTER. (NOTE: THE TELEPHONE NUMBER FOR THE OREGON UTILITY NOTIFICATION CENTER IS 800-332-2334 or 811).
3. CONTRACTOR TO NOTIFY CITY, COUNTY AND ALL UTILITY COMPANIES A MINIMUM OF 48 BUSINESS HOURS (2 BUSINESS DAYS) PRIOR TO START OF CONSTRUCTION, AND COMPLY WITH ALL OTHER NOTIFICATION REQUIREMENTS OF AGENCIES WITH JURISDICTION OVER THE WORK.
4. CONTRACTOR SHALL PROVIDE ALL BONDS AND INSURANCE REQUIRED BY PUBLIC AND/OR PRIVATE AGENCIES HAVING JURISDICTION. WHERE REQUIRED BY PUBLIC AND/OR PRIVATE AGENCIES HAVING JURISDICTION, THE CONTRACTOR SHALL SUBMIT A SUITABLE MAINTENANCE BOND PRIOR TO FINAL PAYMENT.
5. ALL MATERIALS AND WORKMANSHIP FOR FACILITIES IN STREET RIGHT-OF-WAY OR EASEMENTS SHALL CONFORM TO APPROVING AGENCIES' CONSTRUCTION SPECIFICATIONS WHEREIN EACH HAS JURISDICTION, INCLUDING BUT NOT LIMITED TO THE CITY, COUNTY, OREGON HEALTH DIVISION (OHD) AND THE OREGON DEPARTMENT OF ENVIRONMENTAL QUALITY (DEQ).
6. UNLESS OTHERWISE APPROVED BY THE PUBLIC WORKS DIRECTOR, CONSTRUCTION OF ALL PUBLIC FACILITIES SHALL BE DONE BETWEEN 7:00 A.M. AND 6:00 P.M., MONDAY THROUGH FRIDAY.
7. THE CONTRACTOR SHALL PERFORM ALL WORK NECESSARY TO COMPLETE THE PROJECT IN ACCORDANCE WITH THE APPROVED CONSTRUCTION DRAWINGS INCLUDING SUCH INCIDENTALS AS MAY BE NECESSARY TO MEET APPLICABLE AGENCY REQUIREMENTS AND PROVIDE A COMPLETED PROJECT.
8. WORK SHALL NOT BE PERFORMED WITHOUT CITY INSPECTIONS. A MINIMUM 48-HOUR ADVANCE NOTICE OF REQUIRED INSPECTIONS IS REQUIRED. ANY INSPECTION BY THE CITY, COUNTY OR OTHER AGENCIES SHALL NOT, IN ANY WAY, RELIEVE THE CONTRACTOR FROM ANY OBLIGATION TO PERFORM THE WORK IN STRICT COMPLIANCE WITH THE CONTRACT DOCUMENTS, APPLICABLE CODES, AND AGENCY REQUIREMENTS.
9. CITY WILL CONTRACT WITH A SPECIAL INSPECTOR. CONTRACTOR IS RESPONSIBLE TO COORDINATE SPECIAL INSPECTIONS.
10. THE CONTRACTOR SHALL BE RESPONSIBLE TO ENSURE THAT ALL REQUIRED OR NECESSARY INSPECTIONS ARE COMPLETED BY AUTHORIZED INSPECTORS PRIOR TO PROCEEDING WITH SUBSEQUENT WORK WHICH COVERS OR THAT IS DEPENDENT ON THE WORK TO BE INSPECTED. FAILURE TO OBTAIN NECESSARY INSPECTION(S) AND APPROVAL(S) SHALL RESULT IN THE CONTRACTOR BEING FULLY RESPONSIBLE FOR ALL PROBLEMS ARISING FROM UNINSPECTED WORK.
11. ALL INSPECTIONS SHALL ADHERE TO THE ODOT SPECIFICATIONS. CONTRACTOR SHALL BE RESPONSIBLE TO ENSURE THAT ALL REQUIRED OR NECESSARY INSPECTIONS OR OBSERVATIONS FOR ALL WORK PERFORMED, REGARDLESS OF WHO IS RESPONSIBLE FOR PAYMENT. COST FOR RETESTING SHALL BE BORNE BY THE CONTRACTOR. COORDINATE PERIODIC CITY INSPECTIONS AND COMPACTION TESTING FOR THE BEDDING, PIPING ZONE, AND TRENCH BACKFILL EVERY 200', PRESSURE TESTING OF THE WATERLINE, BACTERIAL WATER TEST (PER OREGON HEALTH DIVISION), AND CHLORINE RESIDUAL TESTING IS REQUIRED AND SHALL BE PERFORMED AND INSPECTED.
12. CONTRACTOR SHALL MAINTAIN ONE COMPLETE SET OF APPROVED DRAWINGS ON THE CONSTRUCTION SITE AT ALL TIMES WHEREON HE WILL RECORD ALL APPROVED DEVIATIONS IN CONSTRUCTION FROM THE APPROVED DRAWINGS, AS WELL AS THE STATION LOCATIONS AND DEPTHS OF ALL EXISTING UTILITIES ENCOUNTERED. THESE FIELD RECORD DRAWINGS SHALL BE KEPT UP TO DATE AT ALL TIMES AND SHALL BE AVAILABLE FOR INSPECTION BY THE CITY OR OWNER'S REPRESENTATIVE UPON REQUEST. FAILURE TO CONFORM TO THIS REQUIREMENT MAY RESULT IN DELAY IN PAYMENT AND/OR FINAL ACCEPTANCE OF THE PROJECT.
13. UPON COMPLETION OF CONSTRUCTION OF ALL NEW FACILITIES, CONTRACTOR SHALL SUBMIT A CLEAN SET OF FIELD RECORD DRAWINGS CONTAINING ALL AS-BUILT INFORMATION TO THE ENGINEER. ALL INFORMATION SHOWN ON THE CONTRACTOR'S FIELD RECORD DRAWINGS SHALL BE SUBJECT TO VERIFICATION. IF SIGNIFICANT ERRORS OR DEVIATIONS ARE NOTED, AN AS-BUILT SURVEY PREPARED AND STAMPED BY A REGISTERED PROFESSIONAL LAND SURVEYOR SHALL BE COMPLETED AT THE CONTRACTOR'S EXPENSE.
14. THE CONTRACTOR SHALL RETAIN AND PAY FOR THE SERVICES OF A REGISTERED CIVIL ENGINEER AND/OR LAND SURVEYOR LICENSED IN THE STATE OF OREGON TO ESTABLISH CONSTRUCTION CONTROL AND PERFORM INITIAL CONSTRUCTION SURVEYS TO ESTABLISH THE LINES AND GRADES OF IMPROVEMENTS AS INDICATED ON THE DRAWINGS. STAKING FOR BUILDINGS, STRUCTURES, CURBS, GRAVITY DRAINAGE PIPES/STRUCTURES AND OTHER CRITICAL IMPROVEMENTS SHALL BE COMPLETED USING EQUIPMENT ACCURATE TO 0.04 FEET HORIZONTALLY AND 0.02 FEET VERTICALLY, OR BETTER. USE OF GPS EQUIPMENT FOR CONSTRUCTION STAKING OF THESE IMPROVEMENTS IS PROHIBITED. THE

REGISTERED PROFESSIONAL SURVEYOR SHALL PROVIDE THE DESIGN ENGINEER WITH COPIES OF ALL GRADE SHEETS FOR CONSTRUCTION STAKING PERFORMED FOR THE PROJECT.

15. CONTRACTOR SHALL ERECT AND MAINTAIN BARRICADES, WARNING SIGNS, TRAFFIC CONES PER CITY AND COUNTY REQUIREMENTS IN ACCORDANCE WITH THE MUTCD (INCLUDING OREGON AMENDMENTS). ACCESS TO DRIVEWAYS SHALL BE MAINTAINED AT ALL TIMES. ALL TRAFFIC CONTROL MEASURES SHALL BE APPROVED AND IN PLACE PRIOR TO ANY CONSTRUCTION ACTIVITY. PRIOR TO ANY WORK IN THE EXISTING PUBLIC RIGHT-OF-WAY, CONTRACTOR SHALL SUBMIT FINAL TRAFFIC CONTROL PLAN TO THE CITY, COUNTY AND ODOT FOR REVIEW AND ISSUANCE OF A LANE CLOSURE OR WORK IN RIGHT-OF-WAY PERMIT
16. THE LOCATION AND DESCRIPTIONS OF EXISTING UTILITIES SHOWN ON THE DRAWINGS ARE COMPILED FROM AVAILABLE RECORDS AND/OR FIELD SURVEYS. THE ENGINEER OR UTILITY COMPANIES DO NOT GUARANTEE THE ACCURACY OR THE COMPLETENESS OF SUCH RECORDS. CONTRACTOR SHALL FIELD VERIFY LOCATIONS AND SIZES OF ALL EXISTING UTILITIES PRIOR TO CONSTRUCTION.
17. THE CONTRACTOR SHALL BE RESPONSIBLE FOR LOCATING AND MARKING ALL EXISTING SURVEY MONUMENTS OF RECORD (INCLUDING BUT NOT LIMITED TO PROPERTY AND STREET MONUMENTS) PRIOR TO CONSTRUCTION. IF ANY SURVEY MONUMENTS ARE REMOVED, DISTURBED OR DESTROYED DURING CONSTRUCTION OF THE PROJECT, THE CONTRACTOR SHALL RETAIN AND PAY FOR THE SERVICES OF A REGISTERED PROFESSIONAL SURVEYOR LICENSED IN THE STATE OF OREGON TO REFERENCE AND REPLACE ALL SUCH MONUMENTS PRIOR TO FINAL PAYMENT. THE MONUMENTS SHALL BE REPLACED WITHIN A MAXIMUM OF 90 DAYS, AND THE COUNTY SURVEYOR SHALL BE NOTIFIED IN WRITING AS REQUIRED BY PER ORS 209.150.
18. CONTRACTOR SHALL FIELD VERIFY LOCATION AND DEPTH OF ALL EXISTING UTILITIES WHERE NEW FACILITIES CROSS. ALL UTILITY CROSSINGS MARKED OR SHOWN ON THE DRAWINGS SHALL BE POTHOLED USING HAND TOOLS OR OTHER NON BORING METHODS. PRIOR TO EXCAVATING, CONTRACTOR SHALL BE RESPONSIBLE FOR EXPOSING POTENTIAL UTILITY CONFLICTS FAR ENOUGH AHEAD OF CONSTRUCTION TO MAKE NECESSARY GRADE OR ALIGNMENT MODIFICATIONS WITHOUT DELAYING THE WORK. IF GRADE OR ALIGNMENT MODIFICATION IS NECESSARY, CONTRACTOR SHALL NOTIFY THE DESIGN ENGINEER, AND THE DESIGN ENGINEER OR THE OWNER'S REPRESENTATIVE SHALL OBTAIN APPROVAL FROM THE CITY PRIOR TO CONSTRUCTION.
19. ALL FACILITIES SHALL BE MAINTAINED IN-PLACE BY THE CONTRACTOR UNLESS OTHERWISE SHOWN OR DIRECTED. CONTRACTOR SHALL TAKE ALL PRECAUTIONS NECESSARY TO SUPPORT, MAINTAIN, OR OTHERWISE PROTECT EXISTING UTILITIES AND OTHER FACILITIES AT ALL TIMES DURING CONSTRUCTION. CONTRACTOR TO LEAVE EXISTING FACILITIES IN AN EQUAL OR BETTER-THAN-ORIGINAL CONDITION AND TO THE SATISFACTION OF THE CITY AND OWNER'S REPRESENTATIVE.
20. UTILITIES OR INTERFERING PORTIONS OF UTILITIES THAT ARE ABANDONED IN PLACE SHALL BE REMOVED BY THE CONTRACTOR TO THE EXTENT NECESSARY TO ACCOMPLISH THE WORK. THE CONTRACTOR SHALL PLUG THE REMAINING EXPOSED ENDS OF ABANDONED UTILITIES.
21. CONTRACTOR SHALL REMOVE ALL EXISTING SIGNS, MAILBOXES, FENCES, LANDSCAPING, ETC., AS REQUIRED TO AVOID DAMAGE DURING CONSTRUCTION AND REPLACE THEM TO EXISTING OR BETTER CONDITION.
22. THE CONTRACTOR SHALL BE RESPONSIBLE FOR MANAGING CONSTRUCTION ACTIVITIES TO ENSURE THAT PUBLIC STREETS AND RIGHT-OF-WAYS ARE KEPT CLEAN OF MUD, AND DUST OR DEBRIS. DUST ABATEMENT SHALL BE MAINTAINED BY ADEQUATE WATERING OF THE SITE BY THE CONTRACTOR.
23. FINISH PAVEMENT GRADES AT TRANSITION TO EXISTING PAVEMENT SHALL MATCH EXISTING PAVEMENT GRADES OR BE FEATHERED PAST JOINTS WITH PAVEMENT AS REQUIRED TO PROVIDE A SMOOTH, FREE DRAINING SURFACE.
24. ALL EXISTING OR CONSTRUCTED MANHOLES, CLEANOUTS, MONUMENT BOXES, GAS VALVES, WATER VALVES AND SIMILAR STRUCTURES SHALL BE ADJUSTED TO MATCH FINISH GRADE OF THE PAVEMENT, SIDEWALK, LANDSCAPED AREA OR MEDIAN STRIP WHEREIN THEY LIE. VERIFY THAT ALL VALVE BOXES AND RISERS ARE CLEAN AND CENTERED OVER THE OPERATING NUT.
25. CONTRACTOR SHALL SEED AND MULCH (UNIFORMLY BY HAND OR HYDROSEED) EXPOSED SLOPES AND DISTURBED AREAS WHICH ARE NOT SCHEDULED TO BE LANDSCAPED, INCLUDING TRENCH RESTORATION AREAS. IF THE CONTRACTOR FAILS TO APPLY SEED AND MULCH IN A TIMELY MANNER DURING PERIODS FAVORABLE FOR GERMINATION, OR IF THE SEEDED AREAS FAIL TO GERMINATE, THE OWNER REPRESENTATIVE MAY (AT HIS DISCRETION) REQUIRE THE CONTRACTOR TO INSTALL SOD TO COVER SUCH DISTURBED AREAS.



revisions:  
date: JUNE 11, 2019  
drawn by: CM  
designer: CM  
project no: 19-004C

**CONSTRUCTION NOTES PLAN**

sheet: **C0.1**

**NOTES**

- LOCATIONS OF UNDERGROUND UTILITIES SHOWN ARE BASED ON A COMBINATION OF VISIBLE FACILITIES LOCATED ABOVE GROUND AND UTILITY LOCATE MARKS. NO CERTIFICATION IS MADE TO ACTUAL LOCATION OF UNDERGROUND UTILITIES.

**BENCHMARK**

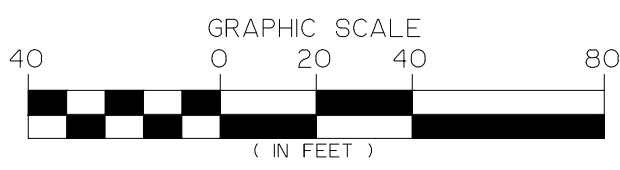
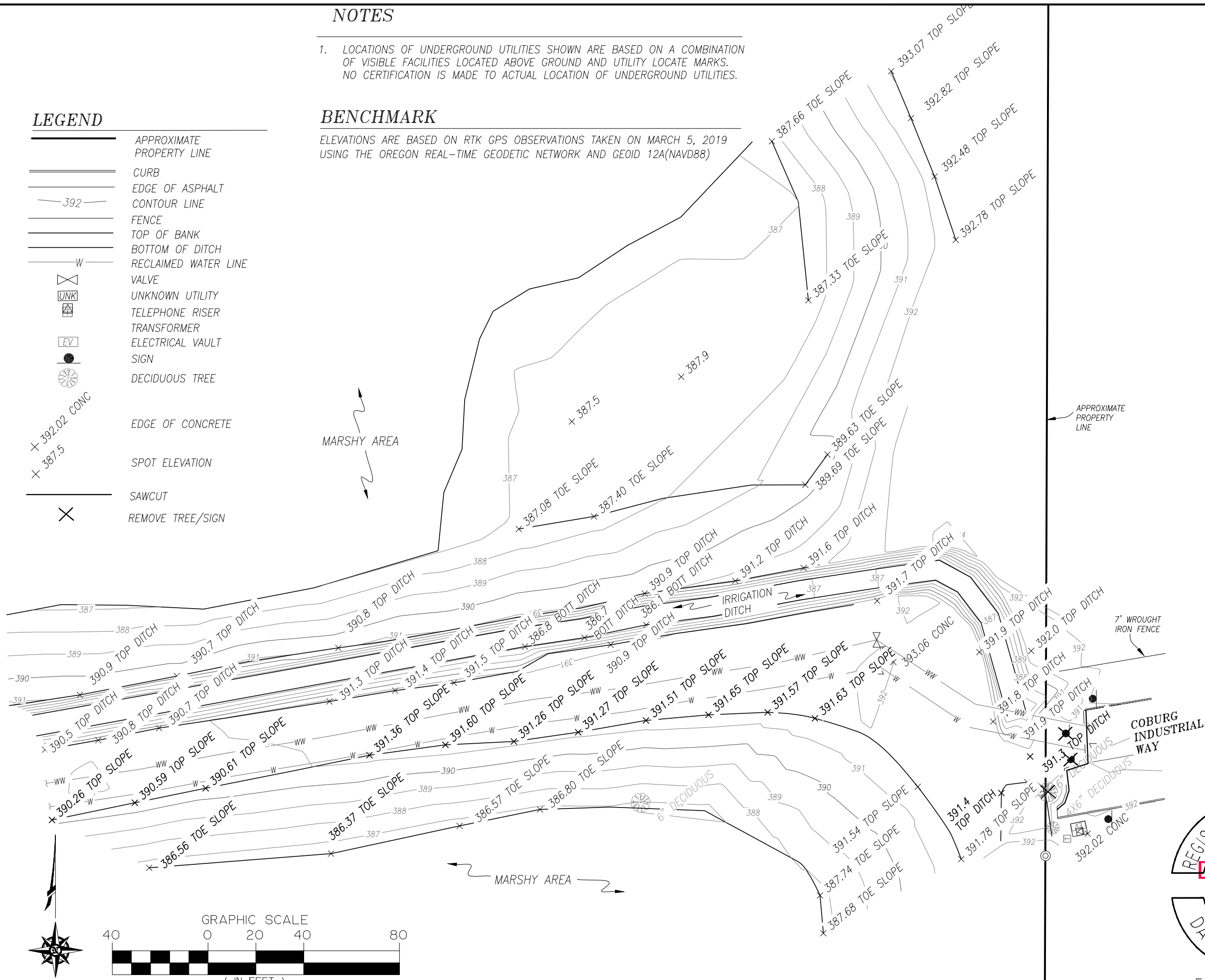
ELEVATIONS ARE BASED ON RTK GPS OBSERVATIONS TAKEN ON MARCH 5, 2019 USING THE OREGON REAL-TIME GEODETIC NETWORK AND GEOID 12A(NAVD88)

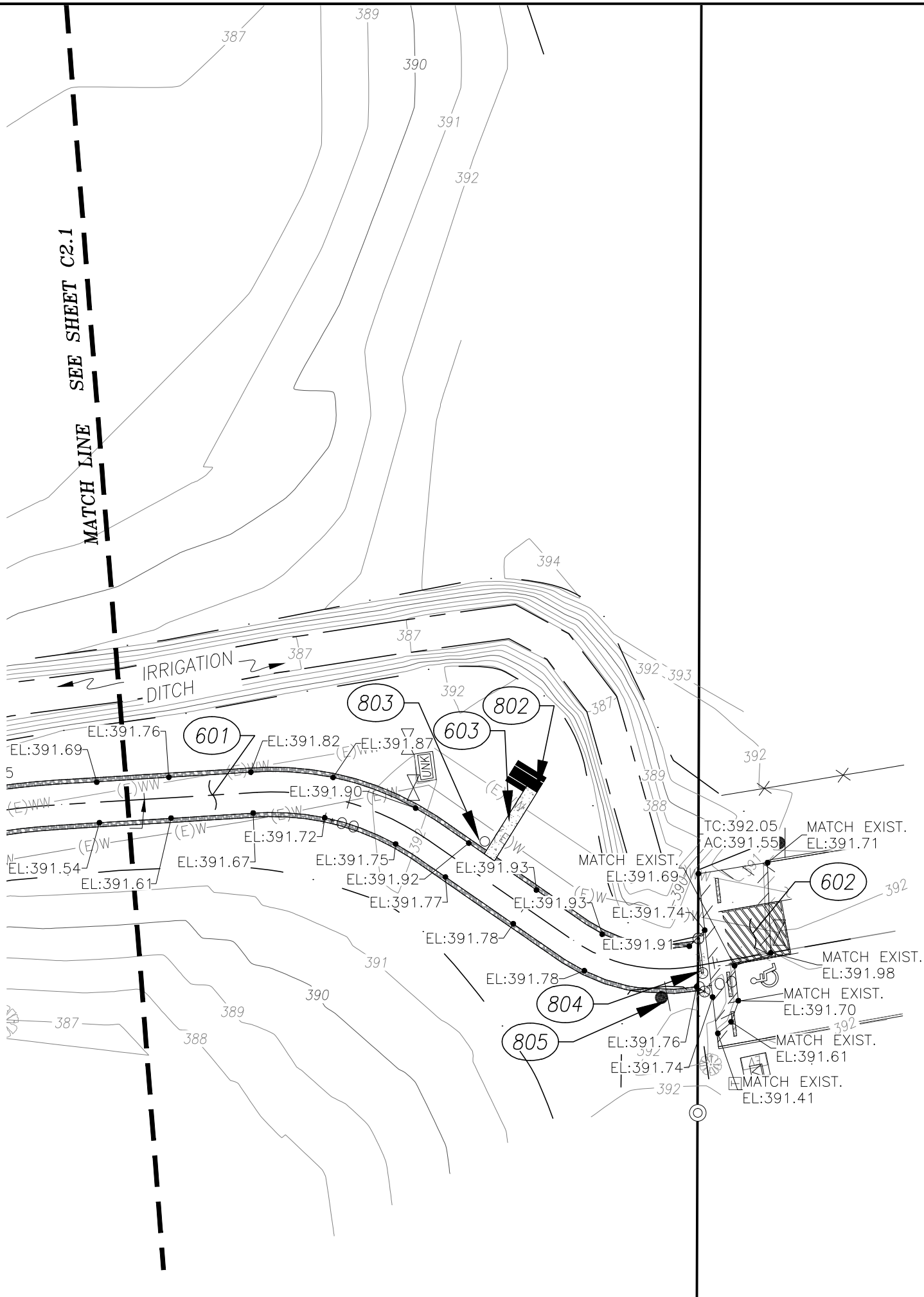
**LEGEND**

- APPROXIMATE PROPERTY LINE
- CURB
- EDGE OF ASPHALT
- CONTOUR LINE
- FENCE
- TOP OF BANK
- BOTTOM OF DITCH
- RECLAIMED WATER LINE
- VALVE
- UNKNOWN UTILITY
- TELEPHONE RISER
- TRANSFORMER
- ELECTRICAL VAULT
- SIGN
- DECIDUOUS TREE
- EDGE OF CONCRETE
- SPOT ELEVATION
- SAWCUT
- REMOVE TREE/SIGN

MARSHY AREA

APPROXIMATE PROPERTY LINE





- 601 CONSTRUCT TRAIL PER DETAIL SHEET C3.0.
- 602 CONSTRUCT PARKING AREA PER DETAIL SHEETS C3.1 & C3.2..
- 603 CONSTRUCT CONCRETE SLAB/WALKWAY PER CONCRETE SECTION C3.1.
- 802 FURNISH AND INSTALL WABASH VALLEY (OR APPROVED EQUAL) ACCESSIBLE PICNIC TABLE PER DETAIL SHEET C3.6.
- 803 FURNISH AND INSTALL SECURED TRASH/RECYCLING RECEPTACLE PER DETAIL SHEET C3.4.
- 804 FURNISH AND INSTALL ACCESS GATE PER DETAIL SHEET C3.5.
- 805 FURNISH AND INSTALL PARK RULES SIGN PER DETAIL SHEET C3.1.

**CITY OF COBURG**  
**TRAIL'S END PARK PLANS**  
N COBURG INDUSTRIAL WAY  
COBURG, OR  
97408

revisions:

date: JUNE 11, 2019  
drawn by: CM  
designer: CM  
project no: 19-004C

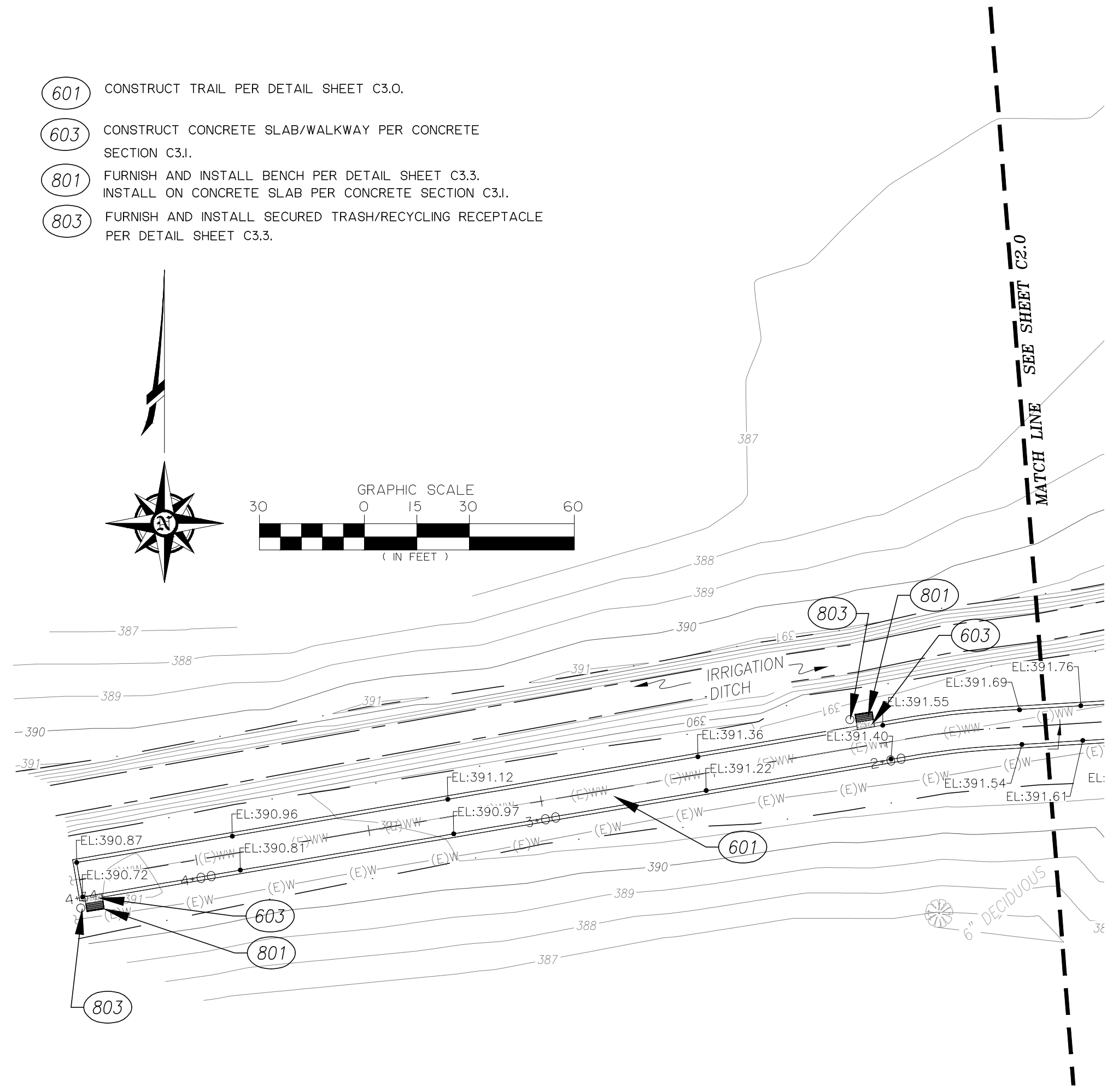
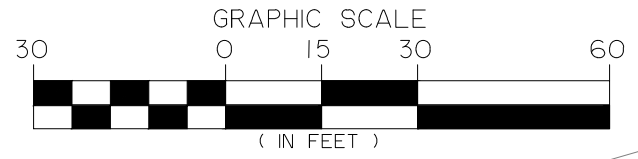
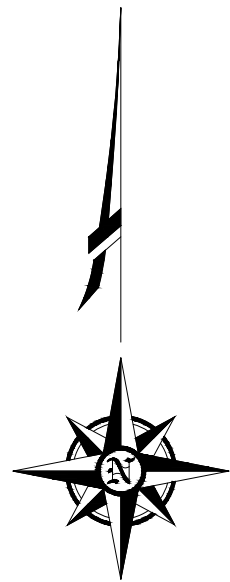
**SOUTH SITE PLAN**

sheet: **C2.0**





- 601 CONSTRUCT TRAIL PER DETAIL SHEET C3.0.
- 603 CONSTRUCT CONCRETE SLAB/WALKWAY PER CONCRETE SECTION C3.I.
- 801 FURNISH AND INSTALL BENCH PER DETAIL SHEET C3.3. INSTALL ON CONCRETE SLAB PER CONCRETE SECTION C3.I.
- 803 FURNISH AND INSTALL SECURED TRASH/RECYCLING RECEPTACLE PER DETAIL SHEET C3.3.



**CITY OF COBURG**  
**TRAIL'S END PARK PLANS**  
N COBURG INDUSTRIAL WAY  
COBURG, OR  
97408

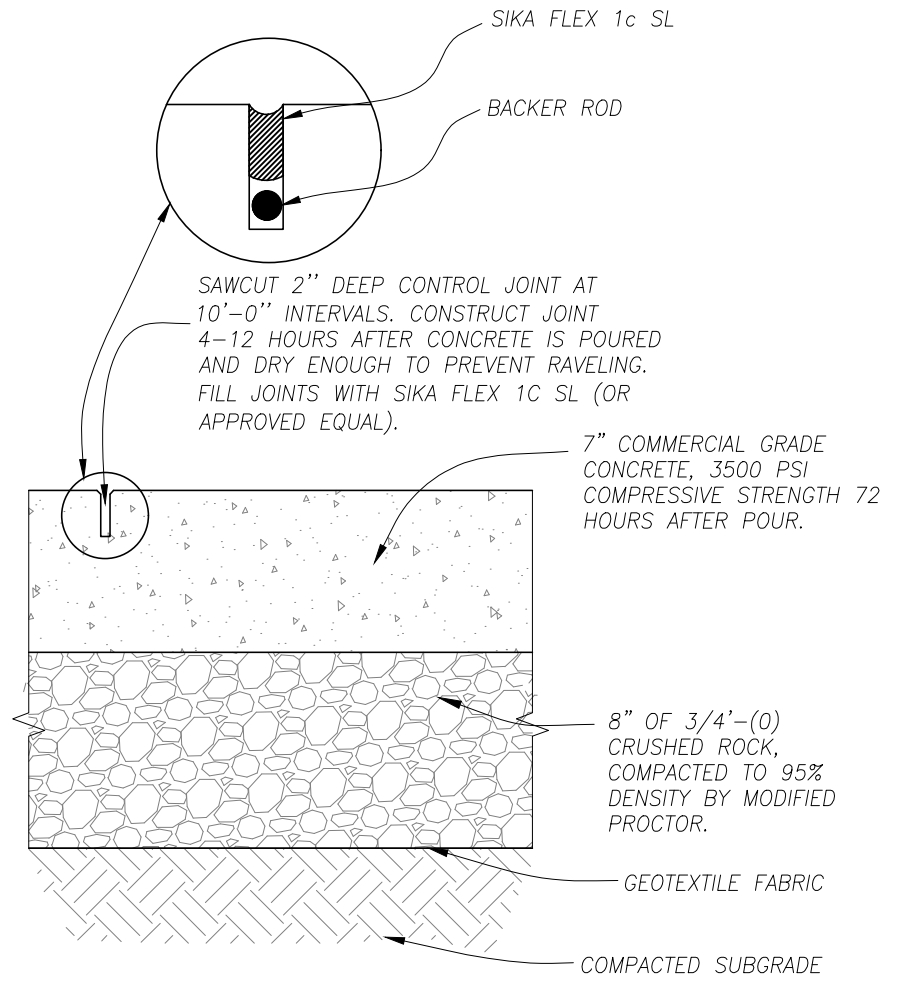
revisions:

date:	JUNE 11, 2019
drawn by:	CM
designer:	CM
project no:	19-004C

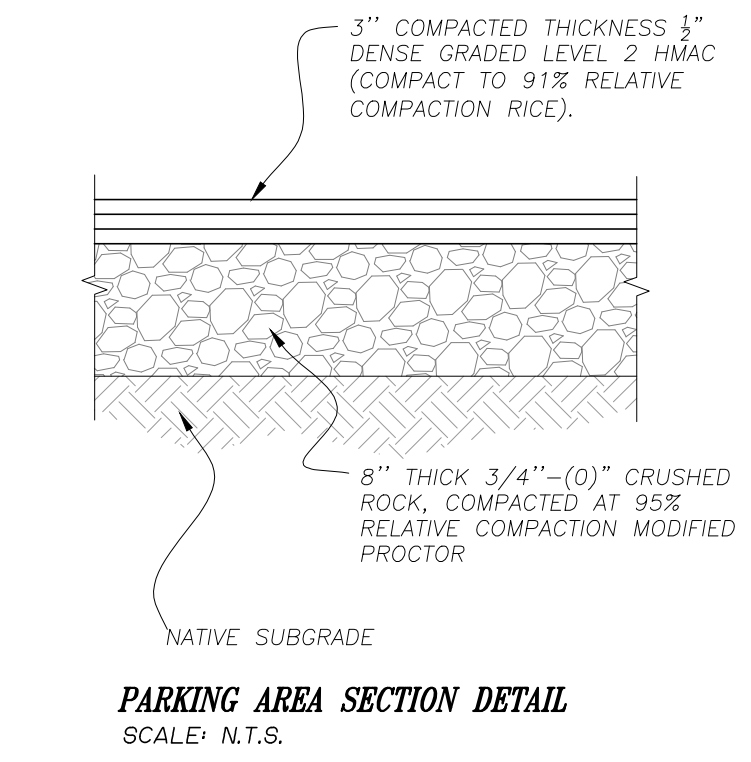
**NORTH SITE PLAN**



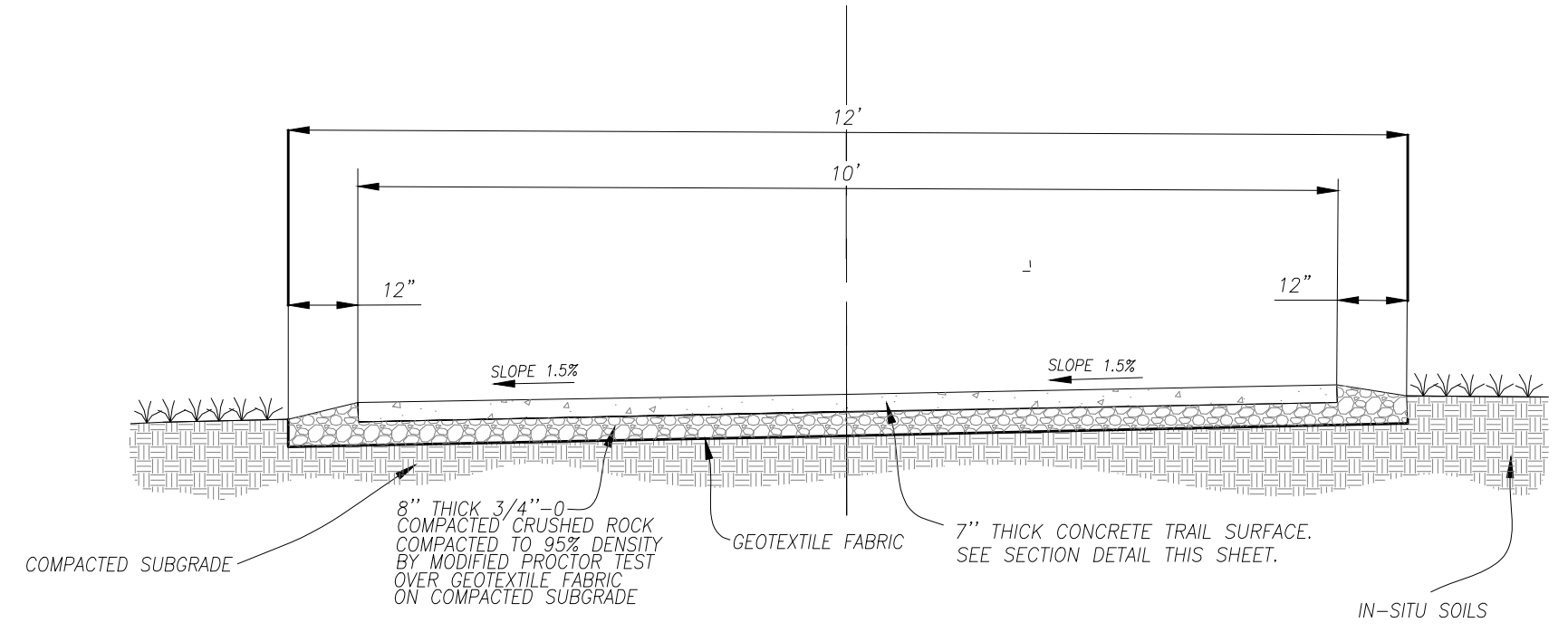
sheet: **C2.1**



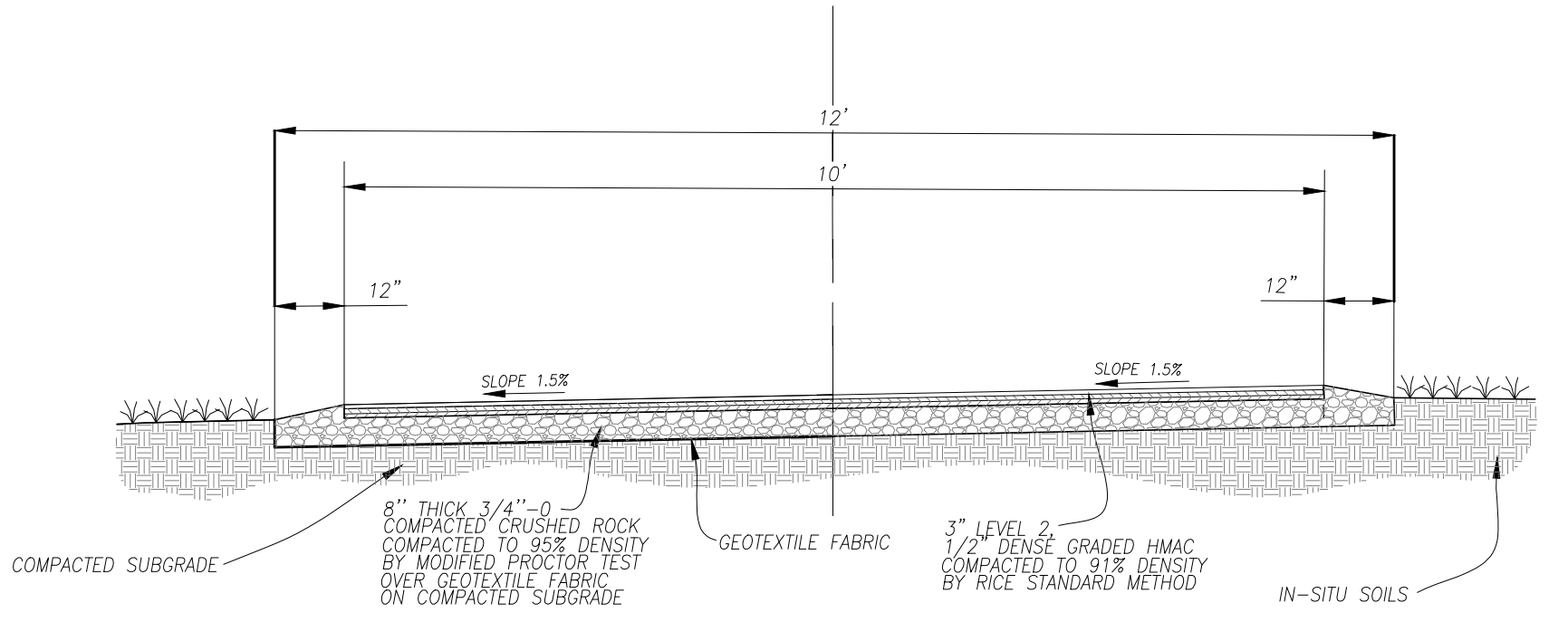
**CONCRETE TRAIL SECTION**  
SCALE: N.T.S.



**PARKING AREA SECTION DETAIL**  
SCALE: N.T.S.



**CONCRETE SURFACED TRAIL SECTION DETAIL (ALTERNATE 'A')**  
SCALE: N.T.S.



**PAVEMENT SURFACED TRAIL SECTION DETAIL (ALTERNATE 'B')**  
SCALE: N.T.S.

REGISTERED PROFESSIONAL  
ENGINEER  
#0280PE  
DIGITALLY SIGNED  
DAMIEN GILBERT  
JULY 13, 2004  
EXPIRES: JUNE 30, 2019

**CITY OF COBURG**  
**TRAIL'S END PARK PLANS**  
N COBURG INDUSTRIAL WAY  
COBURG, OR  
97408

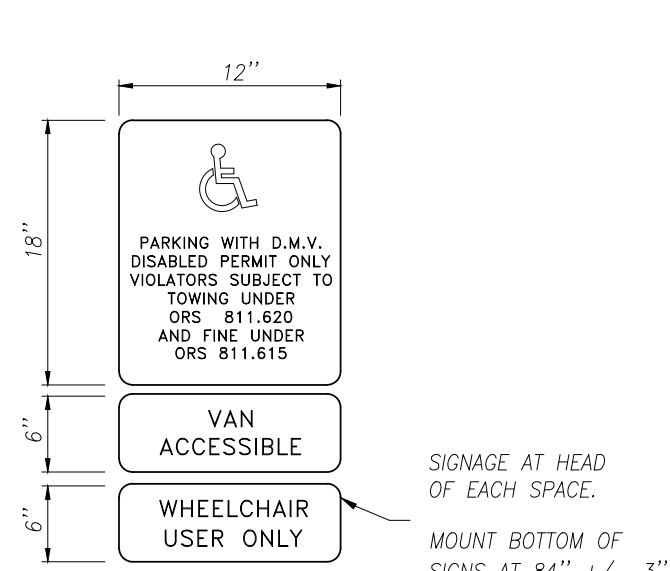
revisions:

date: JUNE 11, 2019  
drawn by: DETAILS  
designer: CM  
project no: 19-004C

SECTION  
DETAILS

sheet: **C3.0**





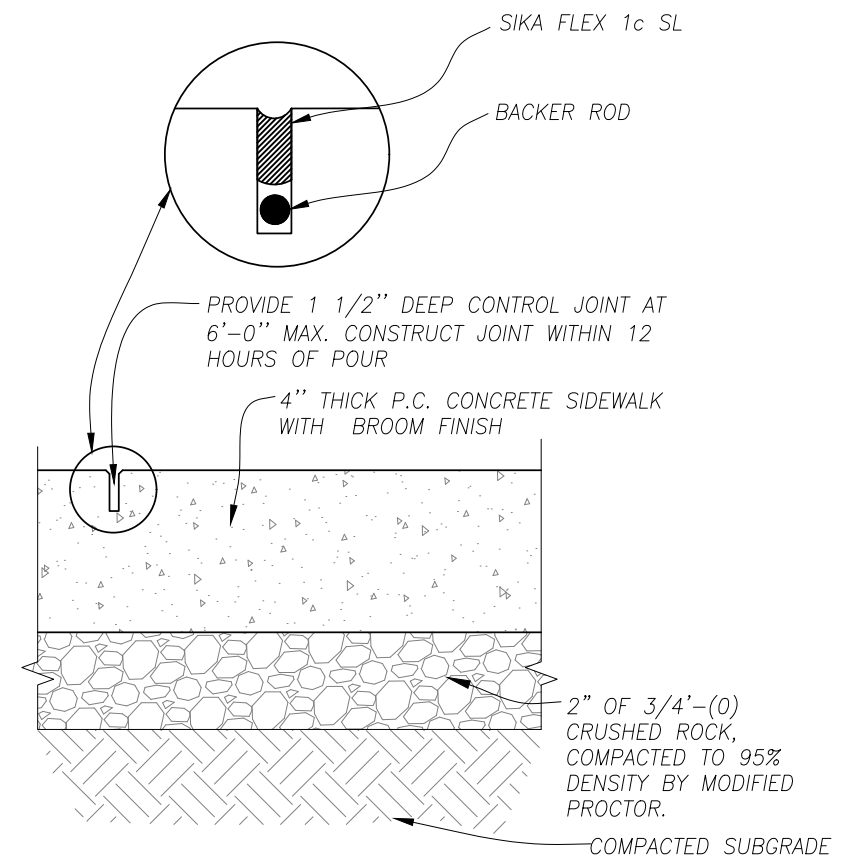
**ADA SIGN DETAIL**  
SCALE: N.T.S.

SIGNAGE AT HEAD OF EACH SPACE.  
MOUNT BOTTOM OF SIGNS AT 84" +/- 3" ABOVE PAVEMENT AT EYE-LEVEL.

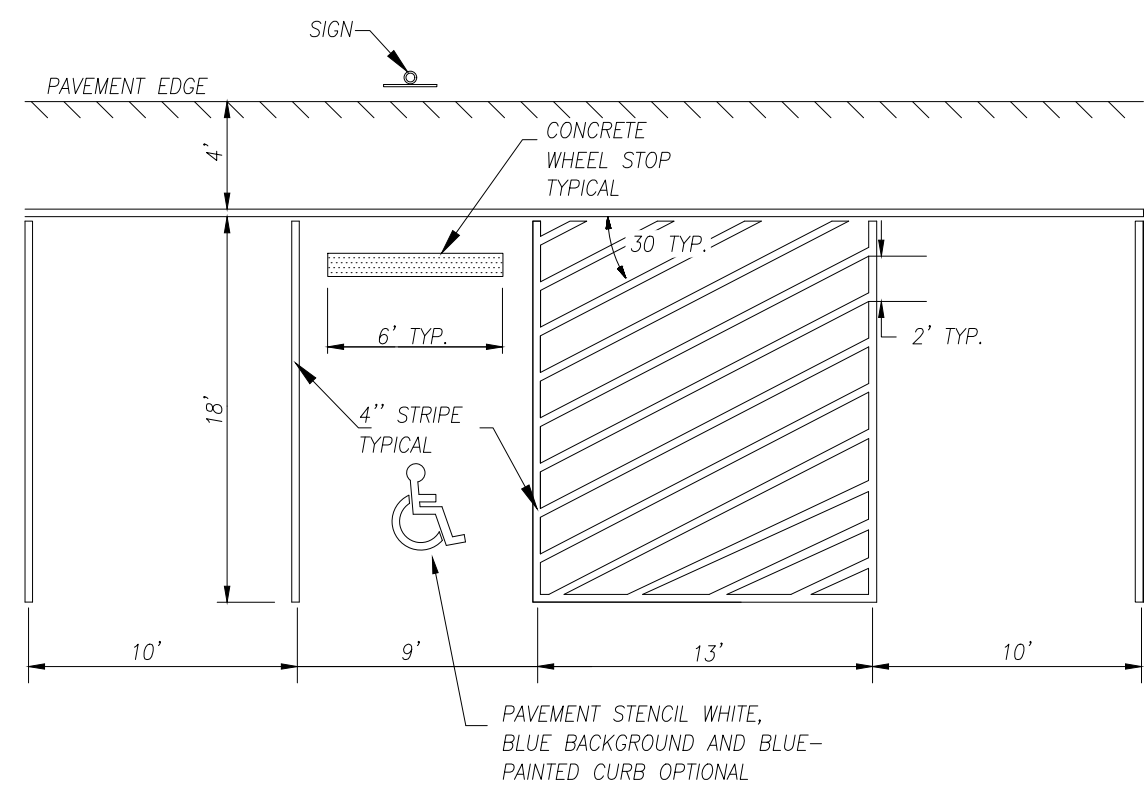


**PARK RULES SIGN DETAIL**  
SCALE: N.T.S.

MOUNT BOTTOM OF SIGNS AT 72" +/- 3" ABOVE GROUND SURFACE.



**CONCRETE WALK/SLAB SECTION DETAIL**  
SCALE: N.T.S.



**SITE PARKING/ADA STRIPING DETAIL**  
SCALE: N.T.S.

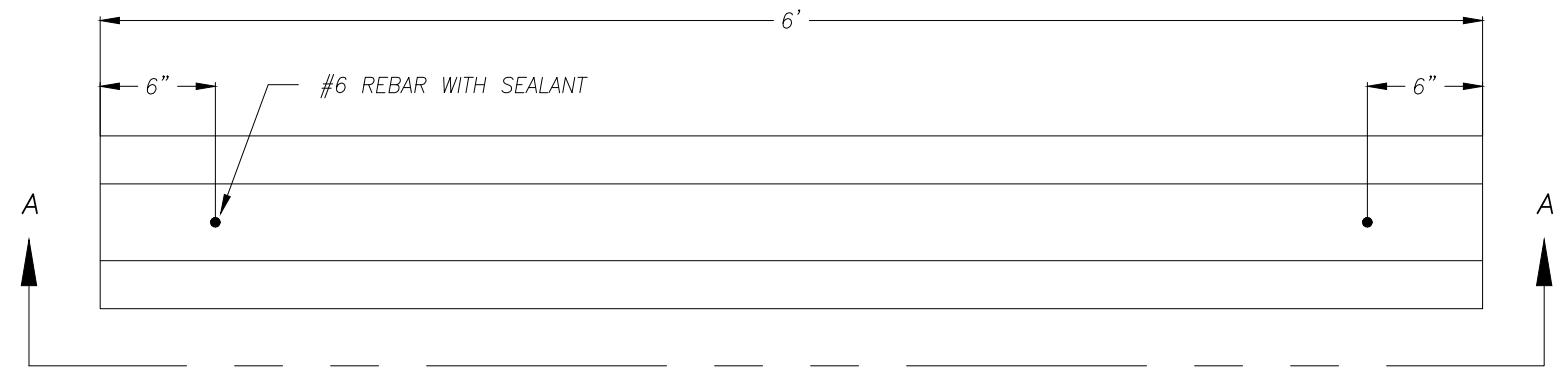
**CITY OF COBURG**  
**TRAIL'S END PARK PLANS**  
N COBURG INDUSTRIAL WAY  
COBURG, OR  
97408

revisions:  
date: JUNE 11, 2019  
drawn by: CM  
designer: CM  
project no: 19-004C

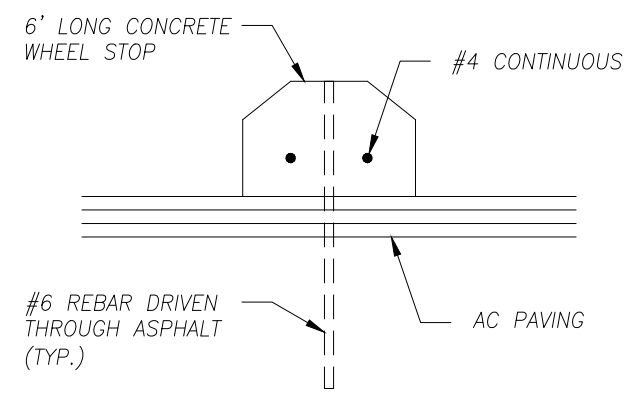
DETAILS

sheet: **C3.1**

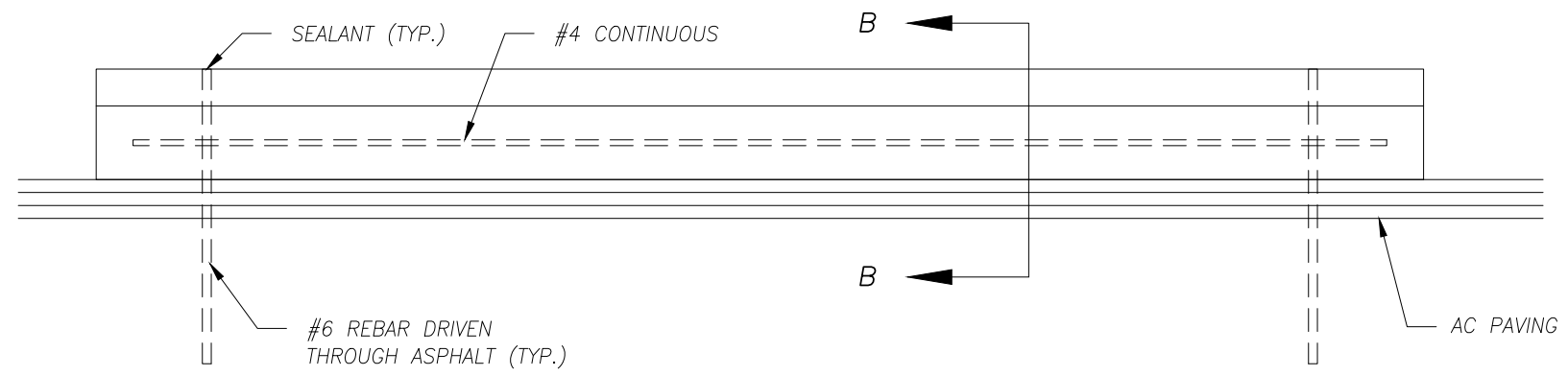




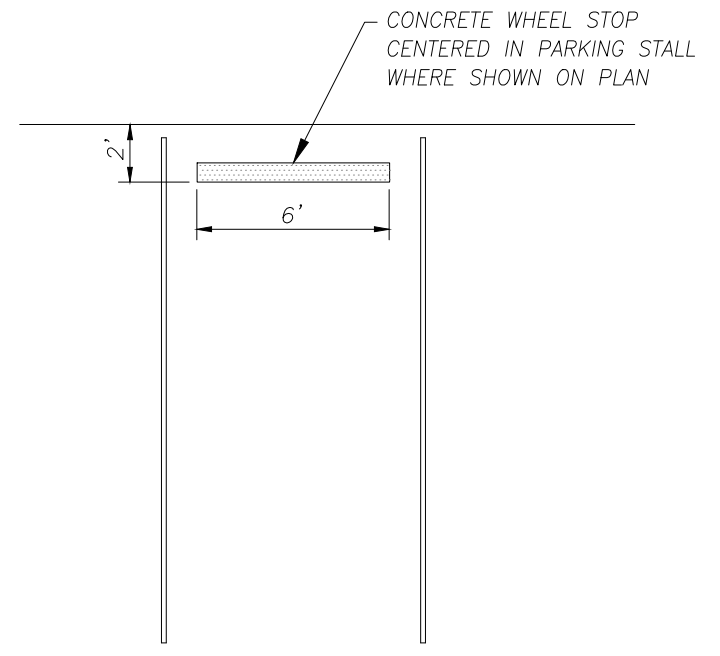
PLAN



SECTION B-B



SECTION A-A



PLACEMENT WITHIN PARKING STALL

**WHEEL STOP DETAILS**  
SCALE: N.T.S.

**CITY OF COBURG**  
**TRAIL'S END PARK PLANS**  
N COBURG INDUSTRIAL WAY  
COBURG, OR  
97408

revisions:  
  
date: JUNE 11, 2019  
drawn by: CM  
designer: CM  
project no: 19-004C

DETAIL SHEET

sheet: **C3.2**

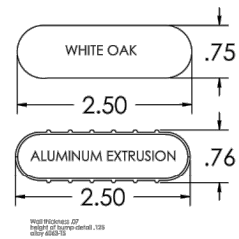


EXPIRES: JUNE 30, 2019

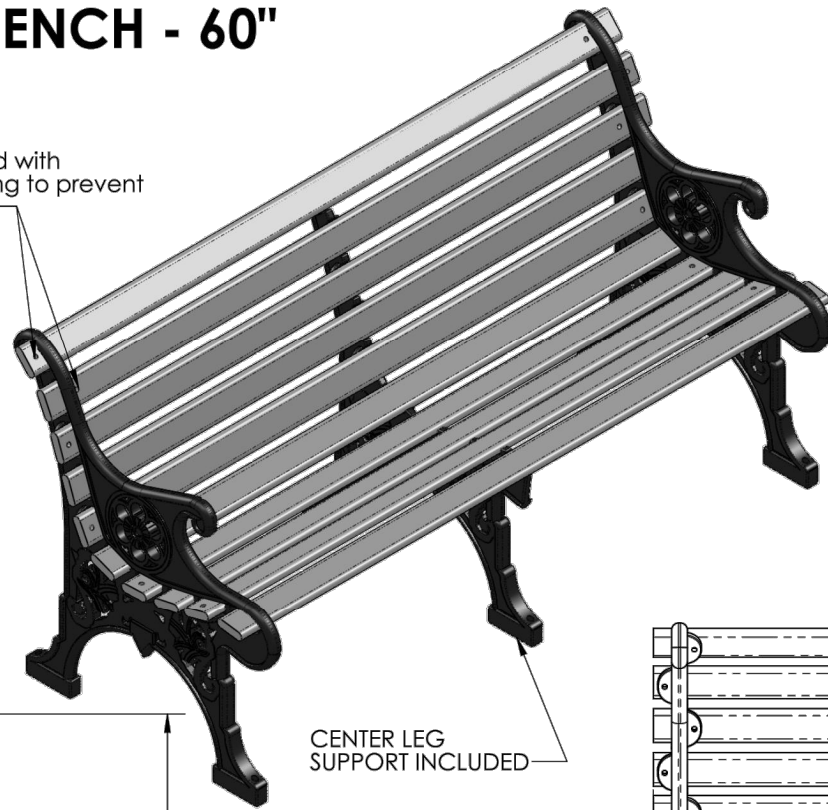


# PRODUCT SPECIFICATIONS

## RENAISSANCE PARK BENCH - 60"



Engineered with cross-bolting to prevent end play



### FRAME

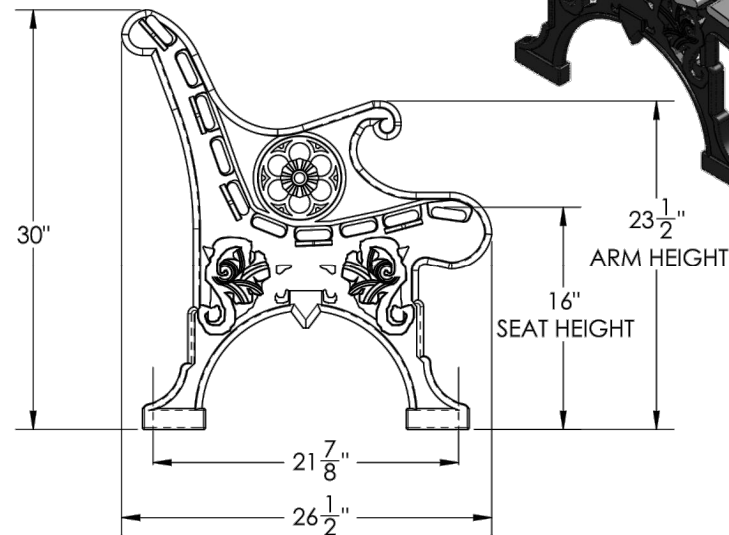
- **Material:** Cast aluminum poured in permanent molds
- **Finish:** Electro static powder coating
- **Color:** Black, White, Green, Tan, Dk. Brown, Dk. Green, Bronze and Blue.

### WOOD RAILS

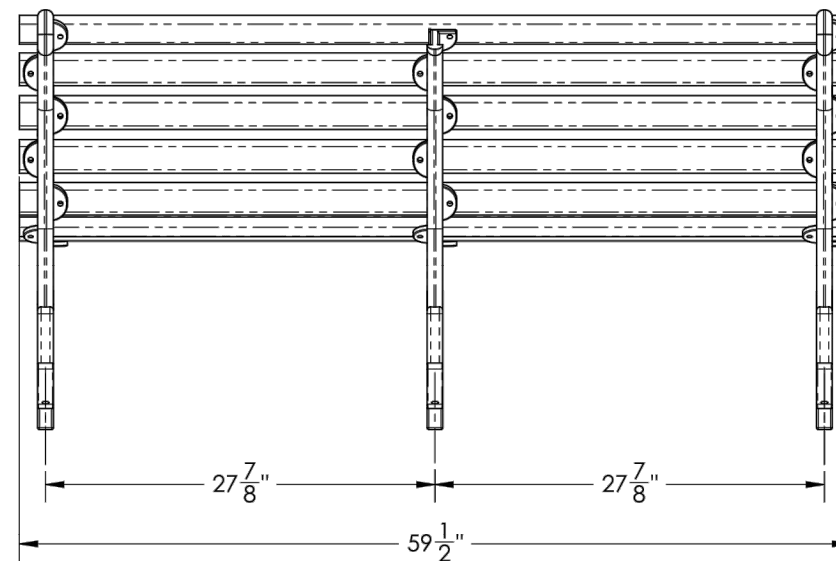
- **Material:** FAS White Oak
- **Size:** 2 1/2" wide by 3/4" milled two edges 3/4" half round
- **Number of Rails:** 10
- **Finish:** PENOFIN® impact impregnated
- **Maintenance:** Apply PENOFIN® as necessary. Follow manufacturer's instructions.

### HARDWARE

- **Carriage Bolts:** 1/4"-20 steel zinc plate, yellow dipped
- **Nuts:** 1/4" steel zinc plate



CENTER LEG SUPPORT INCLUDED



### BOLT DOWN DETAIL

VICTORIAN and RENAISSANCE benches can be drilled for permanent attachment.



### DESCRIPTION:

### RENAISSANCE PARK BENCH - 60"

ADDRESS:  
1350 NORTH AVE.  
SANGER, CALIFORNIA 93657  
PHONE: (559) 875-8250  
FAX: (559) 875-1491  
kingsrivercasting@verizon.net

THE INFORMATION CONTAINED IN THIS DRAWING IS THE SOLE PROPERTY OF KINGS RIVER CASTING. ANY REPRODUCTION IN PART OR WHOLE WITHOUT THE WRITTEN PERMISSION OF KINGS RIVER CASTING IS PROHIBITED.

WEIGHT: 95 LBS SCALE: 1:10

MODEL NUMBER: RBP - 60" SIZE B

### PARK BENCH DETAIL

SCALE: N.T.S.



EXPIRES: JUNE 30, 2019

CITY OF COBURG  
TRAIL'S END PARK PLANS  
N COBURG INDUSTRIAL WAY  
COBURG, OR  
97408

revisions:

date: JUNE 11, 2019  
drawn by: CM  
designer: CM  
project no: 19-004C

DETAIL SHEET

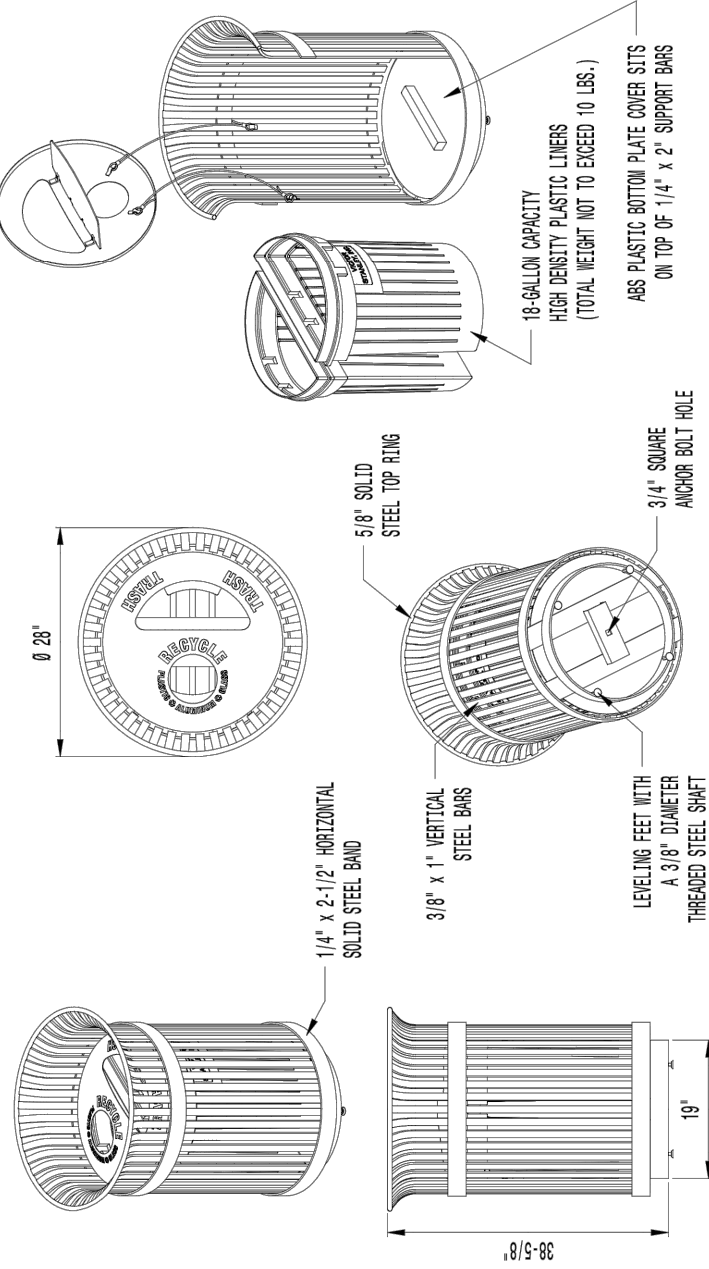
sheet: C3.3

**TRASH/RECYCLING RECEPTACLE DETAIL**  
SCALE: N.T.S.

P.O. DRAWER 330 - JUNKTRK, MD 20754 USA  
TOLL FREE: (800) 368-2573 (USA & CANADA)  
TEL (301) 855-8300 - FAX (410) 257-7579  
WEB SITE: HTTP://WWW.VICTORSTANLEY.COM

**VICTOR STANLEY®**  
*Create a timeless moment.®*

\* ALL DIMENSIONS ARE IN INCHES \*



**AVAILABLE OPTIONS:**

- POWDER COATING
- 10 STANDARD COLORS, 2 OPTIONAL METALLIC COLORS, CUSTOM COLORS (INCLUDING THE RAL RANGE)
- CUSTOM PLAQUES & DECALS
- AVAILABLE WITH STEEL PLAQUES IN VARIOUS SIZES AND PRESSURE SENSITIVE VINYL OUTDOOR DECALS.

**LIDS**

- STANDARD TAPERED FORMED LID. AVAILABLE WITH OPTIONAL DOME LID, DOME LID WITH STAINLESS STEEL ASHTRAY, CONVEX LID WITH SELF-CLOSING DOOR, RAIN BONNET LID, RAIN BONNET LID WITH STAINLESS STEEL ASHTRAY, AND RECYCLE LIDS (AS SHOWN). ASHTRAYS AVAILABLE WITH OPTIONAL ASHTRAY COVER

**SECURITY**

- LID IS SECURED WITH VINYL COATED GALVANIZED STEEL AIRCRAFT CABLE. CABLE IS LOOPED AROUND WELDED IN PLACE ATTACHMENT BRACKETS AND CRIMPED IN PLACE. AVAILABLE WITH OPTIONAL MOUNT WITH 3 IN-LINE ANCHOR HOLES AND OPTIONAL BOTTOM PLATE COVER (AS SHOWN).

**NOTES:**

1. DRAWINGS NOT TO SCALE. DO NOT SCALE DRAWINGS.
2. ALL FABRICATED METAL COMPONENTS ARE STEEL SHOTBLASTED, ETCHED, PHOSPHATIZED, PREHEATED, AND ELECTROSTATICALLY POWDER-COATED WITH T.G.I.C. POLYESTER POWDER COATINGS. PRODUCTS ARE FULLY CLEANED AND PRETREATED, PREHEATED AND COATED WHILE HOT TO FILL CREVICES AND BULD FILM COATING. COATED PARTS ARE THEN FULLY CURED TO COATING MANUFACTURER'S SPECIFICATIONS. THE THICKNESS OF THE RESULTING FINISH AVERAGES 8-10 MILS (200-250 MICRONS).
3. THIS VICTOR STANLEY, INC. PRODUCT MUST BE PERMANENTLY AFFIXED TO THE GROUND. CONSULT YOUR LOCAL CODES FOR REGULATIONS.
4. VICTOR STANLEY, INC., PLASTIC INNER LINERS ARE MOLDED ON TOOLING DESIGNED FOR AND OWNED BY VICTOR STANLEY, INC. THEY OFFER MAXIMUM CAPACITY AND STRENGTH WITH LIGHTWEIGHT CONSTRUCTION USING CRITICAL MOLDED RISBS, INTEGRAL HANDHOIDS, AND HIGH-STRENGTH MATERIALS. THIS MINIMIZES HANDLING DIFFICULTY AND FACILITATES EASY EMPTYING AND STORAGE WHILE AFFORDING LONG SERVICE LIFE.
5. ANCHOR BOLT(S) NOT PROVIDED BY VICTOR STANLEY, INC.
6. FOR HIGH SALT ABUSIVE CLIMATES, HOT-DIP GALVANIZING BEFORE POWDER COATING IS AVAILABLE. HOT-DIP GALVANIZING IS PERFORMED FOR VICTOR STANLEY, INC. BY AN EXPERIENCED QUALIFIED FIRM TO WHICH PRODUCTS ARE SHIPPED FOR GALVANIZING. HOT-DIP GALVANIZING INCLUDES AN AGGRESSIVE PRE-TREATMENT AND IMMERSION IN A TANK OF CHARGED LIQUID ZINC AT OR AROUND 860°F (460°C). THE RESULTING SURFACE IS RESISTANT TO RUST BUT HAS SOME UNEVENNESS RESULTING FROM THE BONDING OF THE ZINC TO THE STEEL SURFACE. AS A RESULT, THE POWDER-COATING SURFACE FINISH OVER THAT GALVANIZED SURFACE MAY EXHIBIT BUMPS, UNEVENNESS, AND MAY NOT BE AS SMOOTH AS THE STANDARD FINISH; THIS UNEVEN AND INCONSISTENT FINISH IS NORMAL FOR GALVANIZING. CONTACT MANUFACTURER FOR DETAILS.
7. ALL SPECIFICATIONS ARE SUBJECT TO CHANGE. CONTACT MANUFACTURER FOR DETAILS.
8. THIS PRODUCT IS SHIPPED FULLY ASSEMBLED.

**S-42**

IRONSITES®

36-GALLON LITTER RECEPTACLE  
SHOWN: OPTIONAL RECYCLE LID (DUAL-FLOW)  
OPTIONAL HALF-MOON LINERS WITH BOTTOM PLATE COVER

COPYRIGHT 2017 VICTOR STANLEY, INC.® ALL RIGHTS RESERVED  
REV. 8/22/17 DRAWN V.F.T. 2017-961



EXPIRES: JUNE 30, 2019

date: JUNE 11, 2019  
drawn by: CM  
designer: CM  
project no: 19-004C

DETAIL SHEET

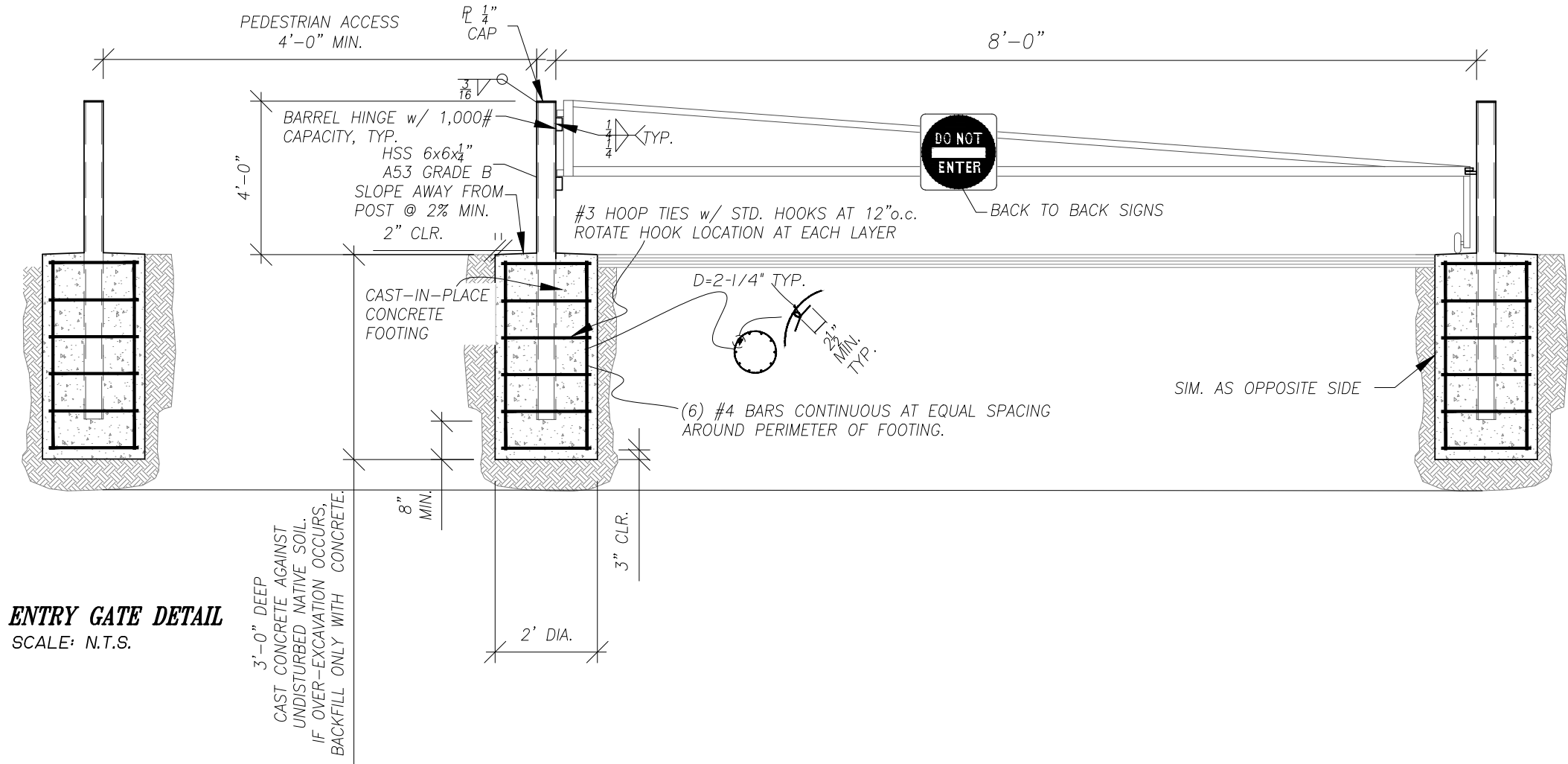
sheet:

**C3.4**

**CITY OF COBURG**  
**TRAIL'S END PARK PLANS**  
N COBURG INDUSTRIAL WAY  
COBURG, OR 97408

revisions:





**ENTRY GATE DETAIL**  
SCALE: N.T.S.

3'-0" DEEP  
CAST CONCRETE AGAINST  
UNDISTURBED NATIVE SOIL.  
IF OVER-EXCAVATION OCCURS,  
BACKFILL ONLY WITH CONCRETE.

**CITY OF COBURG**  
**TRAIL'S END PARK PLANS**  
N COBURG INDUSTRIAL WAY  
COBURG, OR  
97408

revisions:

date: JUNE 11, 2019  
drawn by: CM  
designer: CM  
project no: 19-004C

**DETAIL SHEET**

sheet: **C3.5**



revisions:

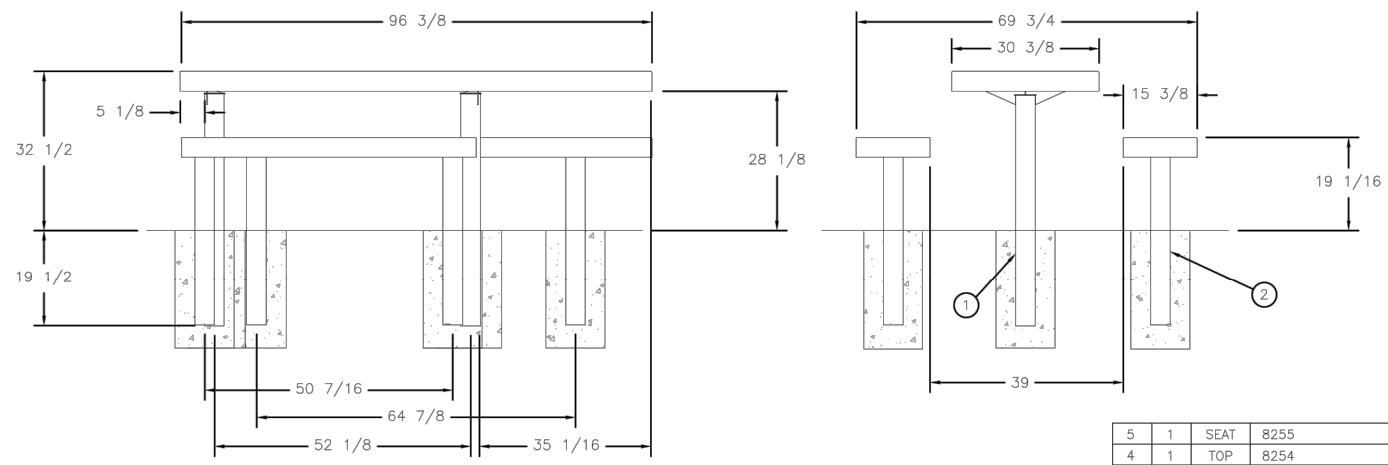
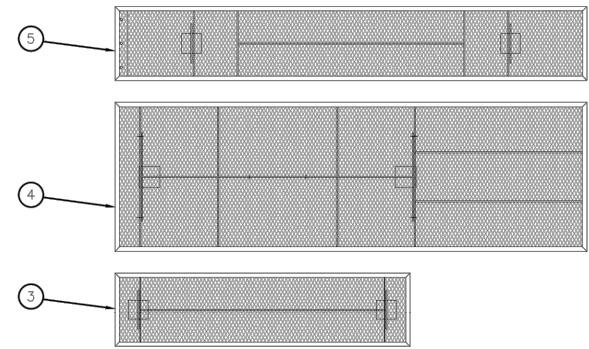
date: JUNE 11, 2019  
drawn by: CM  
designer: CM  
project no: 19-004C

DETAIL SHEET

sheet: **C3.6**

DS207D

REPLACED ONE 8255 SEAT WITH ONE 7551 SEAT.

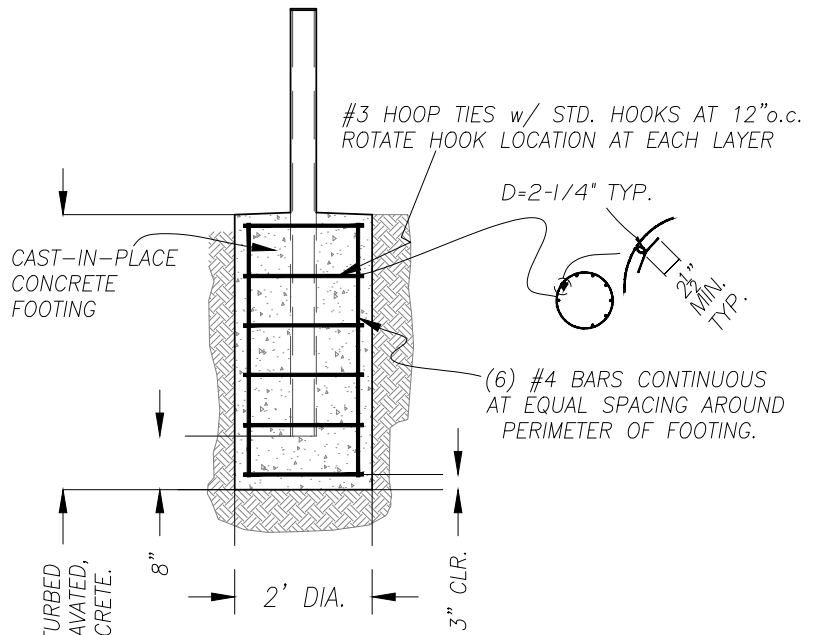


5	1	SEAT	8255
4	1	TOP	8254
3	1	SEAT	7551
2	4	LEG	7322
1	2	LEG	7305

8' ADA - SIDE BY SIDE - DIAMOND - ING  
1/16 1 1 DS207D

- NOTES:
1. UNLESS OTHERWISE SPECIFIED, ALL DIMENSIONS ARE IN INCHES AND PER ASME Y14.5M-1994.
  2. ALL DIMENSIONS ARE AFTER PLASTISOL COATING.
  3. DO NOT SCALE DRAWING.

**PICNIC TABLE DETAIL**  
SCALE: N.T.S.



**PICNIC TABLE FOOTING DETAIL**  
SCALE: N.T.S.

3'-0" DEEP CAST CONCRETE AGAINST UNDISTURBED NATIVE SOIL. IF OVER-EXCAVATED, BACKFILL ONLY WITH CONCRETE.



**ROADSIDE DEVELOPMENT**  
TYPICAL DETAILS

**GENERAL PLANTING NOTES:**

- Ensure That Trees Are Planted Beyond The "Clear Zone". Verify With The Engineer Prior To Planting.
- Adjust Planting Locations So That Vegetation Doesn't Conflict With Above - Or Below-ground Utilities.
- Locate Underground Utility Lines Prior To Digging Tree Holes.
- Adjust Plant Locations To Avoid Conflict With Traffic Sight Lines And Signs Or Other Appurtenances.
- See "American Standard For Nursery Stock" For Plant Quality Minimum Standards Such As Size Of Root Ball Or Caliper Of Trunk.
- All Dimensions Shown On Details Are Minimum Dimensions.
- See Plant List Or Special Provisions For Plant Material That May Need To Be Wild-Collected Or Contract-Grown.

**TREE STAKING NOTES:**

Furnish Tree Stakes On All Tree Plantings. Stakes To Be Construction Grade, Rough Sawn Or Finished Douglas Fir Or Pine. Stain With An Approved Green Penetrating Oil. Stake Size Is To Be 1 1/2" x 1 1/2" By The Following Lengths:

- Trees 36" And Shorter - Use One - 6' (Approx.) Stake.
- Trees Taller Than 36" - Use Two - 8' (Approx.) Stakes.

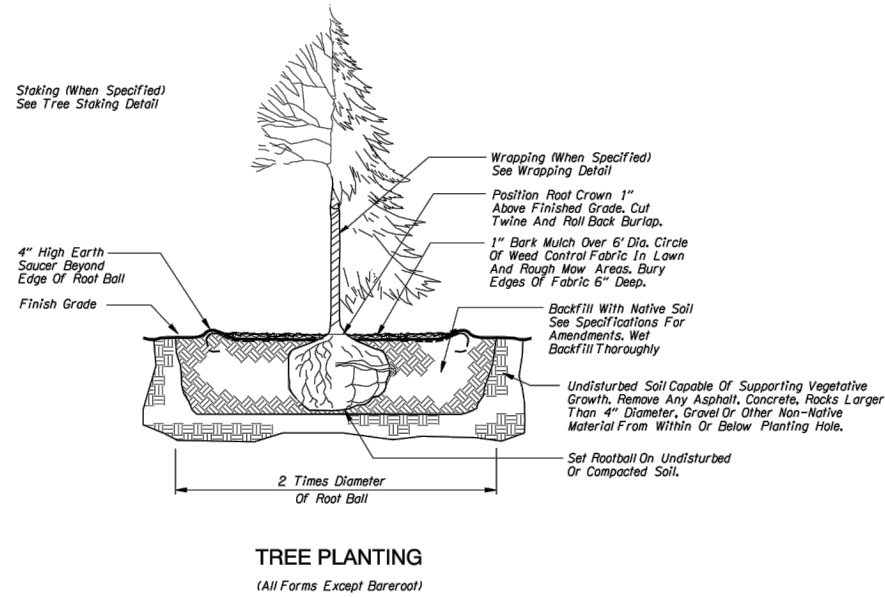
Drive Stakes Vertically And At Least 12" Into Undisturbed Soil. Do Not Drive Stakes Thru Root Ball. Locate Stakes To Best Resist Prevailing Winds Where Possible.

**Tree Ties To Be Either:**

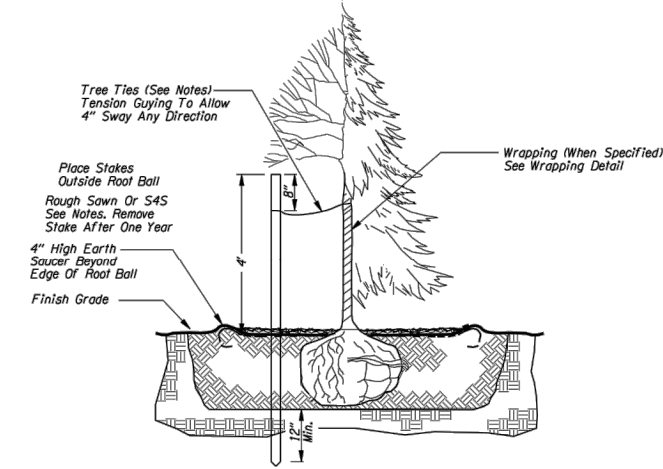
- Plastic Chain Type, Approximately 1" Width By 1/8" Depth. Where Two Stakes Are Required, Cross The Ties Between Stakes And Wrap Tie Once Around Tree. Fasten Securely To Stake.
- Rigid Guy System As Manufactured By Alpine Nursery, Boring, Oregon. The Galvanized Wire Is To Be Approximately 1/8" In Thickness And 24" In Length. There Is To Be A Plastic Sleeve Over The Portion That Goes Around The Tree. The Wire Tie Is To Go Thru The Wood Stake And Be Securely Fastened.

e\_detail6100.dgn 8-10-2006

DET 6100



**TREE PLANTING**  
(All Forms Except Bareroot)



**TREE STAKING DETAIL**  
(All Forms Except Bareroot)

<p>The selection and use of this detail, while designed in accordance with generally accepted engineering principles and practices, is the sole responsibility of the user and should not be used without consulting a Registered Professional Engineer.</p>	<p><b>OREGON DEPARTMENT OF TRANSPORTATION</b> TECHNICAL SERVICES DETAILS</p>	
	<p>TREE PLANTING AND STAKING DETAILS</p>	<p>DETAIL NO. DET6100</p>

**PLANTING DETAIL**  
SCALE: N.T.S.

**CITY OF COBURG**  
**TRAIL'S END PARK PLANS**  
N COBURG INDUSTRIAL WAY  
COBURG, OR  
97408

revisions:

date: JUNE 11, 2019  
drawn by: CM  
designer: CM  
project no: 19-004C

**PLANTING  
DETAIL  
SHEET**

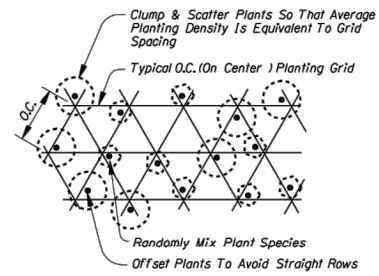
sheet: **C3.7**



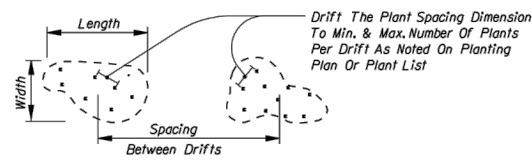
EXPIRES: JUNE 30, 2019

ROADSIDE DEVELOPMENT  
PLANTING DETAILS

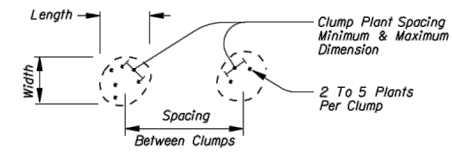
e\_det6105.dgn 8-14-2006



RANDOM PLANTING PATTERN



DRIFT PATTERN



CLUMP PATTERN

DET 6105

<p><i>The selection and use of this detail, while designed in accordance with generally accepted engineering principles and practices, is the sole responsibility of the user and should not be used without consulting a Registered Professional Engineer.</i></p>	<p><b>OREGON DEPARTMENT OF TRANSPORTATION</b> TECHNICAL SERVICES DETAILS</p>	
	<p>PLANTING PATTERN DETAILS</p>	<p>DETAIL NO. DET6105</p>

**PLANTING PATTERN DETAIL**  
SCALE: N.T.S.



EXPIRES: JUNE 30, 2019

**CITY OF COBURG**  
**TRAIL'S END PARK PLANS**  
N COBURG INDUSTRIAL WAY  
COBURG, OR  
97408

revisions:

date: JUNE 11, 2019  
drawn by: CM  
designer: CM  
project no: 19-004C

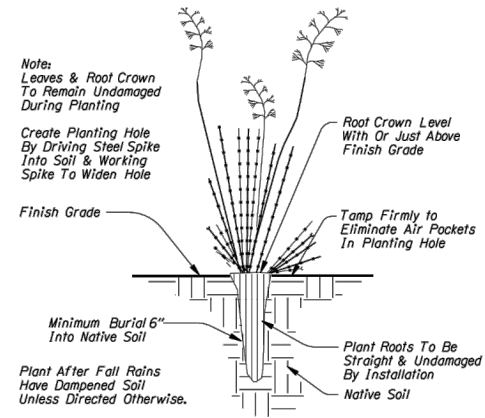
PLANTING  
DETAIL  
SHEET

sheet: **C3.8**

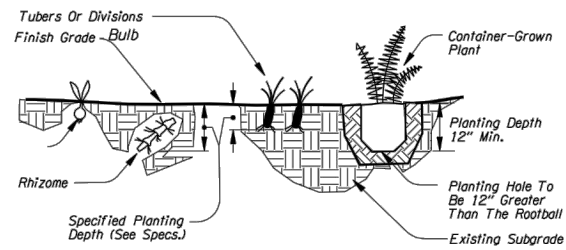
e-detail6102 8-10-2006

DET 6102

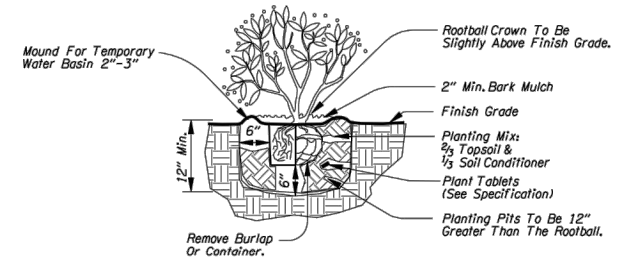
**ROADSIDE DEVELOPMENT  
PLANTING DETAILS**



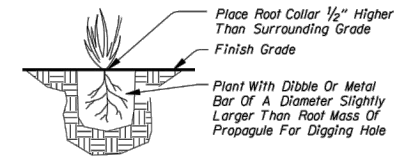
**STYRO-BLOC PLUG PLANTING**



**HERBACEOUS PLANTING**

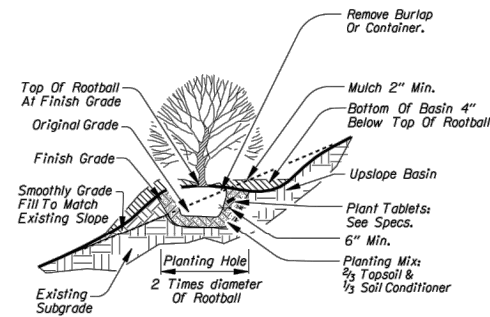


**SHRUB PLANTING**  
(All Forms Except Bareroot)

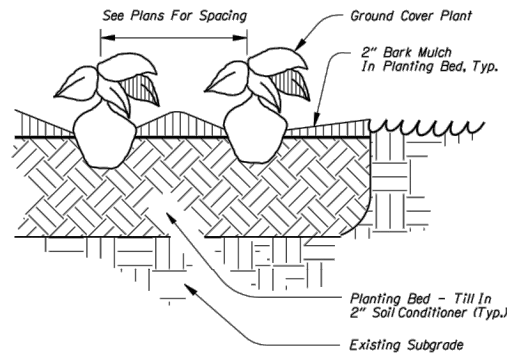


**PROPAGULE PLANTING**

**Note:**  
See "American Standard For Nursery Stock" For Plant Quality Minimum Standards Such As Size Of Root Ball Or Caliper Of Trunk.  
All Dimensions Shown On Details Are Minimum Dimensions.  
See Plant List Or Special Provisions For Plant Material That May Need To Be Wild-Collected Or Contract-Grown.



**SLOPED AREA SHRUB PLANTING**



**GROUNDCOVER PLANTING**

<p>The selection and use of this detail, while designed in accordance with generally accepted engineering principles and practices, is the sole responsibility of the user and should not be used without consulting a Registered Professional Engineer.</p>	<p><b>OREGON DEPARTMENT OF TRANSPORTATION</b> TECHNICAL SERVICES DETAILS</p>	
	<p>PLANTING DETAILS</p>	<p>DETAIL NO. DET6102</p>

**CITY OF COBURG  
TRAIL'S END PARK PLANS**  
N COBURG INDUSTRIAL WAY  
COBURG, OR  
97408

revisions:

date: JUNE 11, 2019  
drawn by: CM  
designer: CM  
project no: 19-004C

**PLANTING  
DETAIL  
SHEET**

sheet: **C3.9**

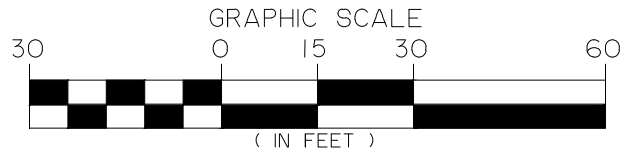
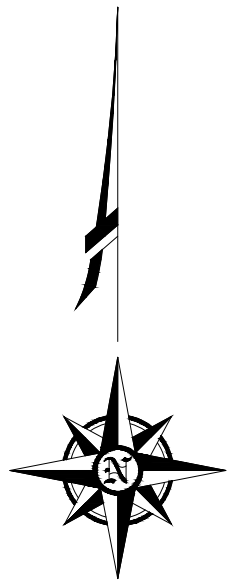
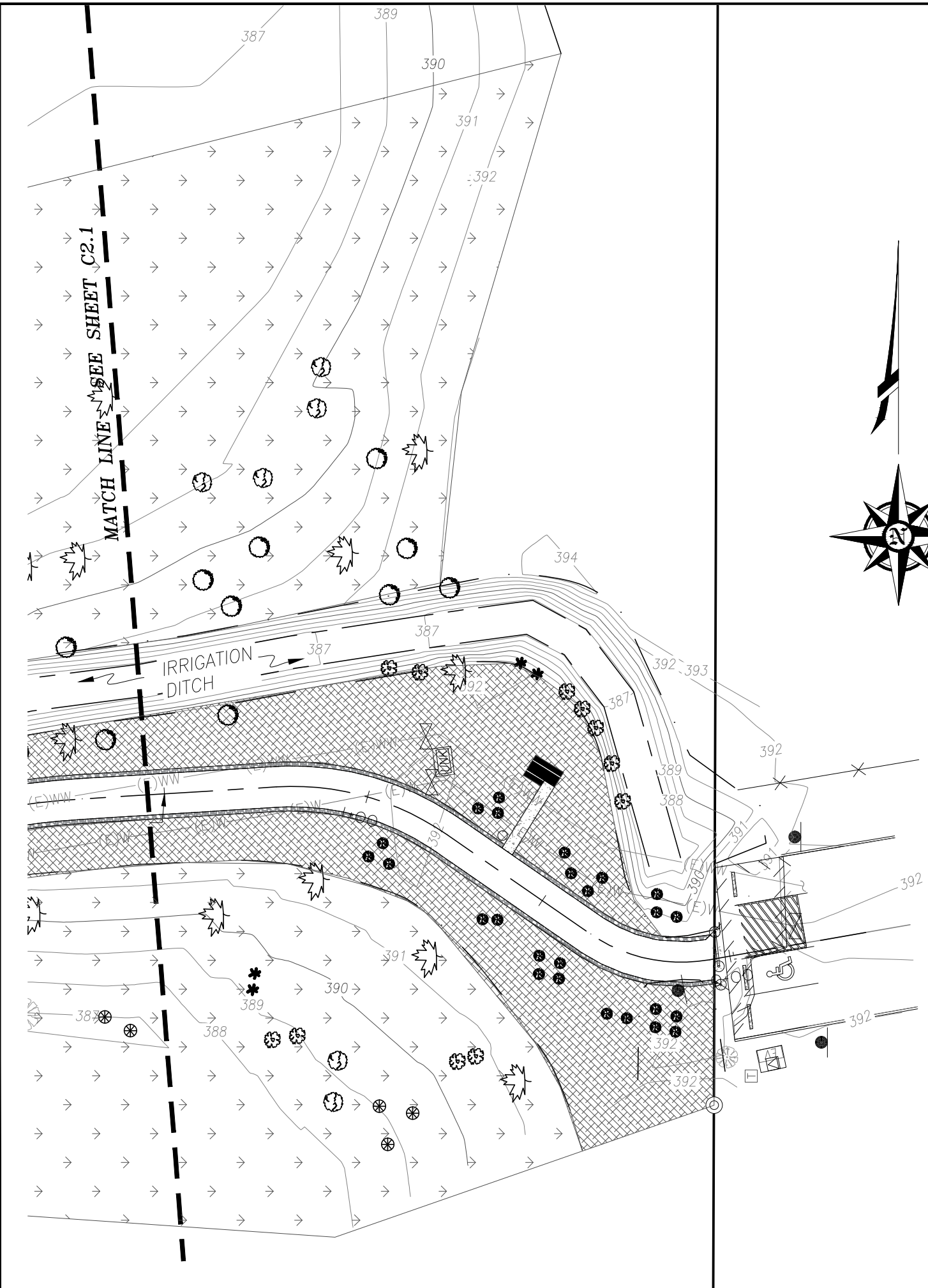


**PLANTING DETAIL**  
SCALE: N.T.S.



**NOTE:**

1.. FOR PLANTING SCHEDULE, GENERAL NOTES AND LANDSCAPING GUIDELINES,  
SEE L1.1.



**CITY OF COBURG**  
**TRAIL'S END PARK PLANS**  
N COBURG INDUSTRIAL WAY  
COBURG, OR  
97408

revisions:

date: JUNE 11, 2019  
drawn by: CM  
designer: CM  
project no: 19-004C

**SOUTH SITE PLAN**

sheet: **L1.0**



EXPIRES: JUNE 30, 2019

WETLAND PARK PLANT SCHEDULE

SYMBOL	KEY	QUANTITY	BOTANICAL NAME	COMMON NAME	MINIMUM SIZE	COMMENTS
--------	-----	----------	----------------	-------------	--------------	----------

TREES

	PT	25	POPULUS TRICHOCARPA	BLACK COTTONWOOD	10-GALLON	MATCHING, FULL BALLED & BURLAPED
	FL	25	FRAXINUS LATIFOLIA	OREGON ASH	10-GALLON	MATCHING, FULL BALLED & BURLAPED

LARGE SHRUBS/SMALL TREES

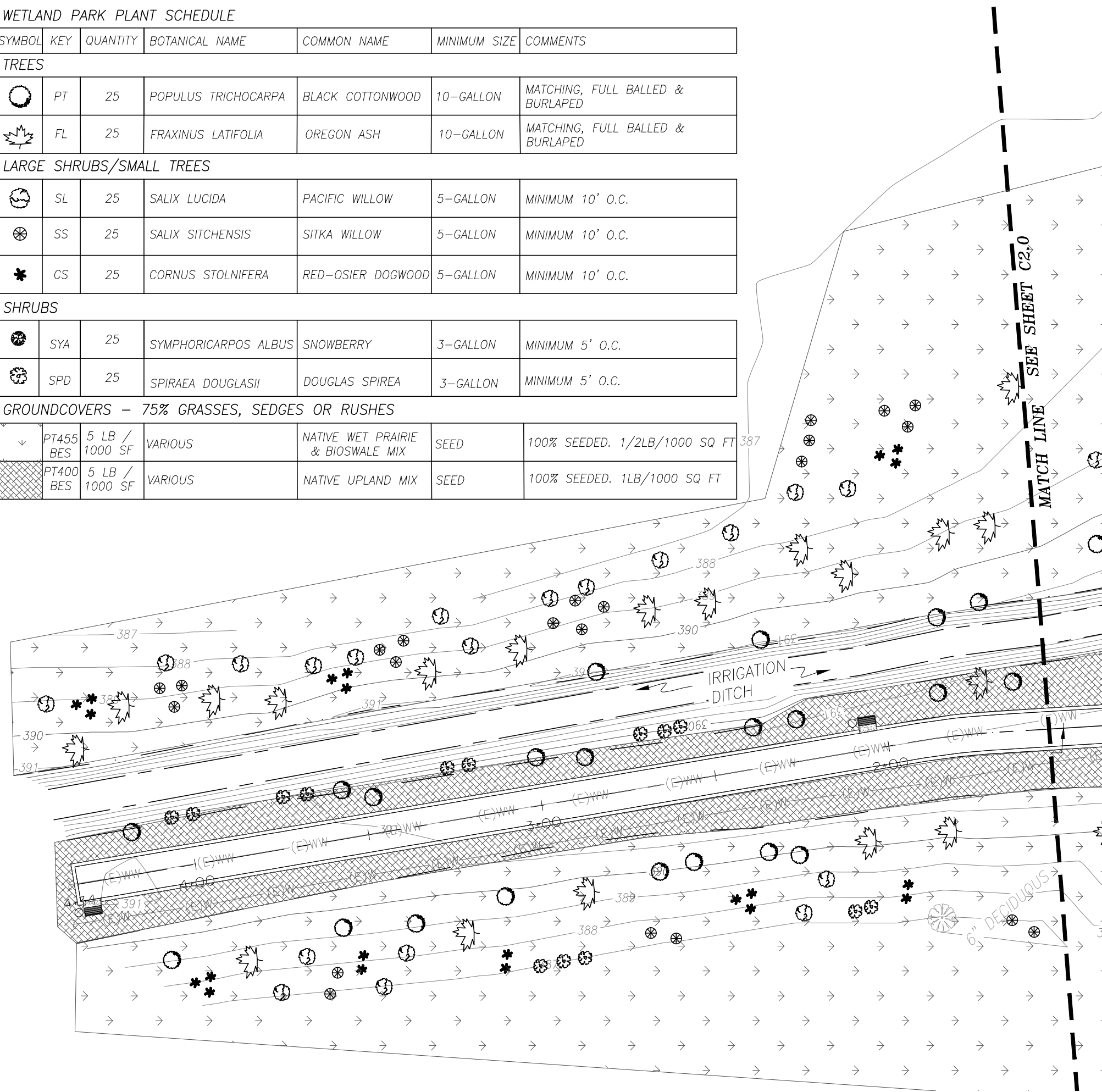
	SL	25	SALIX LUCIDA	PACIFIC WILLOW	5-GALLON	MINIMUM 10' O.C.
	SS	25	SALIX SITCHENSIS	SITKA WILLOW	5-GALLON	MINIMUM 10' O.C.
	CS	25	CORNUS STOLNIFERA	RED-OSIER DOGWOOD	5-GALLON	MINIMUM 10' O.C.

SHRUBS

	SYA	25	SYMPHORICARPOS ALBUS	SNOWBERRY	3-GALLON	MINIMUM 5' O.C.
	SPD	25	SPIRAEA DOUGLASII	DOUGLAS SPIREA	3-GALLON	MINIMUM 5' O.C.

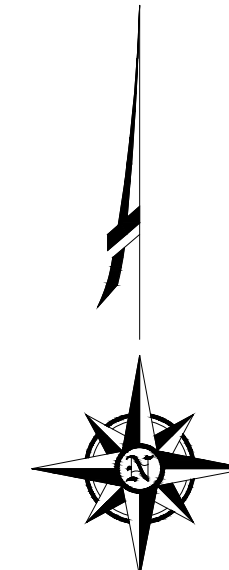
GROUNDCOVERS - 75% GRASSES, SEDGES OR RUSHES

	PT455 BES	5 LB / 1000 SF	VARIOUS	NATIVE WET PRAIRIE & BIOSWALE MIX	SEED	100% SEEDED. 1/2LB/1000 SQ FT
	PT400 BES	5 LB / 1000 SF	VARIOUS	NATIVE UPLAND MIX	SEED	100% SEEDED. 1LB/1000 SQ FT



GENERAL NOTES AND GUIDELINES:

- 100% OF AREA TO BE SEEDED AND PLANTED TO FIRST BE MANAGED FOR INVASIVE SPECIES CONTROL BY BOTH MECHANICAL REMOVAL AND HERBICIDAL TREATMENT.
  - ALL SEED TO BE HYDROSEEDED.
  - ALL PLANT MATERIAL TO BE HAND WATERED WITH WATERING TRUCK BY THE CITY OR BY A TEMPORARY IRRIGATION SYSTEM THROUGH REQUIRED ESTABLISHMENT PERIOD.
  - GROUNDCOVER/GRASSES TO BE PLANTED/SEEDED UP TO BASE OF SHRUBS AND TREES EVEN WHERE HATCH SYMBOL DOES NOT CONTINUE BENEATH SHRUB SYMBOL ON THE PLAN, TYPICAL.
  - TREES AND SHRUBS TO BE PLANTED IN RANDOM PLANTING PATTERN PER DETAIL SHEET C3.6.
  - TREES TO BE PLANTED PER DETAIL SHEET C3.6.
  - SHRUBS TO BE PLANTED PER DETAIL SHEET C3.8.
  - ALL TREES TO BE PLANTED MINIMUM 10' FROM CENTERLINE OF WASTEWATER AND WATER RECLAMATION PIPES.
- PLANT MATERIAL:
- PROVIDE ONLY HEALTHY, FULL PLANT MATERIAL AT SIZES INDICATED.
  - PLANT SUBSTITUTIONS TO BE APPROVED BY ENGINEER.
  - PLANT LAYOUT TO BE APPROVED BY ENGINEER PRIOR TO INSTALLATION.



**Branch ENGINEERING**  
Since 1977

civil • transportation  
structural • geotechnical  
SURVEYING

310 5th Street  
Springfield, OR 97477  
p: 541.746.0637  
www.BranchEngineering.com  
Springfield OR | Albany OR

CITY OF COBURG  
TRAIL'S END PARK PLANS  
N COBURG INDUSTRIAL WAY  
COBURG, OR  
97408



revisions:

date: JUNE 11, 2019  
drawn by: CM  
designer: CM  
project no: 19-004C

NORTH  
SITE  
PLAN

sheet: **L1.1**

copyright © 2015 Branch Engineering, Inc.